

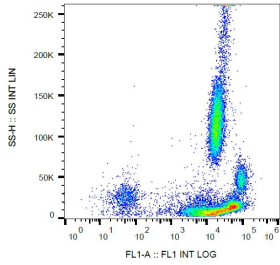
## Anti-beta 2 Microglobulin Antibody [B2M-01] (FITC) (A85549)

### Specifications:

Name:	Anti-beta 2 Microglobulin Antibody [B2M-01] (FITC)
Description:	Mouse monoclonal [B2M-01] antibody to beta 2 Microglobulin (FITC).
Specificity:	This antibody reacts with beta 2 Microglobulin (extracellular antigen), associated with cell-surface MHC Class I molecules and other membrane antigens. It also reacts with soluble beta 2 Microglobulin. beta 2 Microglobulin is a 12 kDa Ig like glycoprotein expressed on lymphocytes, thymocytes, monocytes, granulocytes, platelets, endothelial cells, and epithelial cells. It is absent on erythrocytes.
Applications:	Flow Cytometry
Recommended Dilutions:	Flow Cytometry: 1 µg/ml
Reactivity:	Human
Immunogen:	Purified human beta2-microglobulin.
Host:	Mouse
Clonality:	Monoclonal
Clone ID:	B2M-01
Isotype:	IgG2a
Conjugate:	FITC
Purification:	This antibody is conjugated with FITC under optimum conditions. The conjugate is purified by size-exclusion chromatography.
Concentration:	1 mg/ml
Product Form:	Liquid
Formulation:	Supplied in Phosphate Buffered Saline, pH 7.4, with 15 mM Sodium Azide.
Storage:	Store in the dark at 2-8°C. Do not freeze!
Disclaimer:	This product is for research use only. It is not intended for diagnostic or therapeutic use.

## Anti-beta 2 Microglobulin Antibody [B2M-01] (FITC) (A85549)

Images:



Surface staining of  $\beta$ 2-microglobulin in human peripheral blood with Anti-beta 2 Microglobulin Antibody (A85549).