

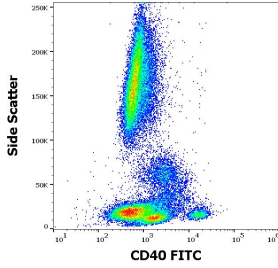
Anti-CD40 Antibody [HI40a] (FITC) (A85560)

Specifications:

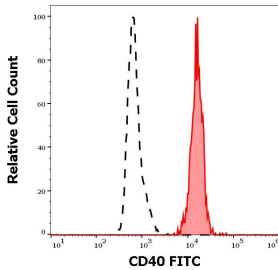
Name:	Anti-CD40 Antibody [HI40a] (FITC)
Description:	Mouse monoclonal [HI40a] antibody to CD40 (FITC).
Specificity:	The antibody HI40a recognizes CD40 (BP50), a 48 kDa type I single chain transmembrane glycoprotein expressed on normal and neoplastic B cells, but not on terminally differentiated plasma cells. CD40 antigen is also present on Hodgkin's and Reed-Sternberg cells, follicular dendritic cells, some macrophages, basal epithelial cells and endothelial cells.
Applications:	Flow Cytometry
Recommended Dilutions:	Flow Cytometry: This reagent is designed for analysis of human blood cells using 20 µl reagent / 100 µl of whole blood or 10 ⁶ cells in a suspension.
Reactivity:	Human
Immunogen:	Human CD40a.
Host:	Mouse
Clonality:	Monoclonal
Clone ID:	HI40a
Isotype:	IgG1
Conjugate:	FITC
Purification:	This antibody is conjugated with FITC under optimum conditions. The conjugate is purified by size-exclusion chromatography.
Product Form:	Liquid
Formulation:	Supplied in Phosphate Buffered Saline with 15 mM Sodium Azide.
Storage:	Store in the dark at 2-8°C. Do not freeze!
Disclaimer:	This product is for research use only. It is not intended for diagnostic or therapeutic use.

Anti-CD40 Antibody [HI40a] (FITC) (A85560)

Images:



Surface staining of human peripheral blood cells with Anti-CD40 Antibody [HI40a] (FITC). Cells in the lymphocyte gate were used for analysis.



Separation of human CD40 positive lymphocytes (red-filled) from neutrophil granulocytes (black-dashed) in flow cytometry analysis (surface staining) of human peripheral whole blood stained with Anti-CD40 Antibody [HI40a] (FITC) (20 μ l reagent / 100 μ l of peripheral whole blood).