

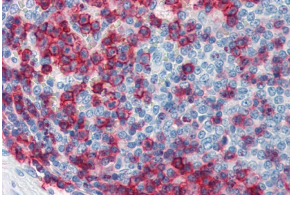
Anti-CD43 Antibody [MEM-59] (A85600)

Specifications:

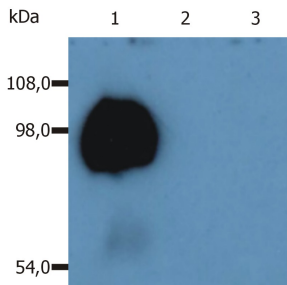
Name:	Anti-CD43 Antibody [MEM-59]
Description:	Mouse monoclonal [MEM-59] antibody to CD43.
Specificity:	This antibody recognizes a neuraminidase-sensitive extracellular epitope on CD43, a 95-135 kDa type I transmembrane glycoprotein (mucin-type) which is involved in lymphocyte activation. CD43 is expressed by platelets and at high levels on the surface of all leukocytes. It is negative on resting B lymphocytes and erythrocytes.
Applications:	Flow Cytometry, IP, WB, IHC-P
Recommended Dilutions:	Flow Cytometry: 1 µg/ml, IHC-P: 10 µg/ml
Reactivity:	Human
Immunogen:	Human T lymphocytes.
Host:	Mouse
Clonality:	Monoclonal
Clone ID:	MEM-59
Isotype:	IgG1
Conjugate:	Unconjugated
Purification:	Protein A chromatography.
Concentration:	1 mg/ml
Purity:	> 95% (by SDS-PAGE).
Product Form:	Liquid
Formulation:	Supplied in Phosphate Buffered Saline, pH 7.4, with 15 mM Sodium Azide.
Storage:	Shipped at 4°C. Upon delivery aliquot and store at -20°C. Avoid freeze / thaw cycles.
Disclaimer:	This product is for research use only. It is not intended for diagnostic or therapeutic use.

Anti-CD43 Antibody [MEM-59] (A85600)

Images:



Immunohistochemistry staining of human spleen (paraffin sections) using Anti-CD43 Antibody (A85600).



Western Blotting analysis (non-reducing conditions) of isolated peripheral blood lymphocytes of various species using Anti-CD43 Antibody (A85600). Lane 1: Lysate of human PBL. Lane 2: Lysate of canine PBL. Lane 3: Lysate of porcine PBL.