

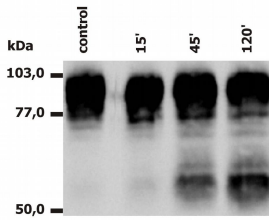
## Anti-CD18 Antibody [MEM-148] (A85610)

### Specifications:

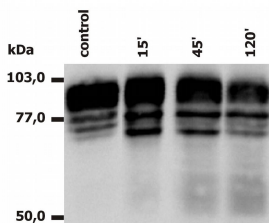
Name:	Anti-CD18 Antibody [MEM-148]
Description:	Mouse monoclonal [MEM-148] antibody to CD18.
Specificity:	The antibody MEM-148 recognizes an epitope on CD18 which is essentially inaccessible in intact integrin molecules on resting leukocytes, but is exposed on high-affinity state of LFA-1 or on unassociated CD18. CD18 (integrin beta2 subunit; beta2 integrin) is a 90-95 kDa type I transmembrane protein expressed on all leukocytes.
Applications:	Flow Cytometry, IP, WB
Recommended Dilutions:	Flow Cytometry: 8 µg/ml
Reactivity:	Human
Immunogen:	Peripheral blood mononuclear cells.
Host:	Mouse
Clonality:	Monoclonal
Clone ID:	MEM-148
Isotype:	IgG1
Conjugate:	Unconjugated
Purification:	Protein A chromatography.
Concentration:	1 mg/ml
Purity:	> 95% (by SDS-PAGE).
Product Form:	Liquid
Formulation:	Supplied in Phosphate Buffered Saline, pH 7.4, with 15 mM Sodium Azide.
Storage:	Shipped at 4°C. Upon delivery aliquot and store at -20°C. Avoid freeze / thaw cycles.
Disclaimer:	This product is for research use only. It is not intended for diagnostic or therapeutic use.

## Anti-CD18 Antibody [MEM-148] (A85610)

### Images:



Western Blotting analysis of PMA-activated neutrophils using Anti-CD18 Antibody (A85610). Anti-CD18 Antibody (A85610) recognizes the lower 65 to 70 kDa zone (activation marker) as well as the upper 78 to 96 kDa zone (CD18).



Western Blotting analysis of PMA-activated monocytes using Anti-CD18 Antibody (A85610). Anti-CD18 Antibody (A85610) recognizes the lower 65 to 70 kDa zone (activation marker) as well as the upper 78 to 96 kDa zone (CD18).