

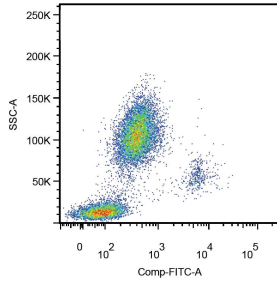
Anti-CD14 Antibody [MEM-18] (FITC) (A85708)

Specifications:

Name:	Anti-CD14 Antibody [MEM-18] (FITC)
Description:	Mouse monoclonal [MEM-18] antibody to CD14 (FITC).
Specificity:	This antibody reacts with CD14, a 53-55 kDa GPI-linked extracellular membrane glycoprotein expressed on monocytes, macrophages, and weakly on granulocytes. It is also expressed by most tissue macrophages. In human, the epitope recognized by this antibody is located between amino acids 57-64.
Applications:	Flow Cytometry
Recommended Dilutions:	Flow Cytometry: This reagent is designed for analysis of human blood cells using 20 µl reagent / 100 µl of whole blood or 10 ⁶ cells in a suspension.
Reactivity:	Human, Non-Human Primates
Immunogen:	A crude mixture of human urinary proteins, precipitated by ammonium sulphate, from the urine of a patient suffering from proteinuria.
Host:	Mouse
Clonality:	Monoclonal
Clone ID:	MEM-18
Isotype:	IgG1
Conjugate:	FITC
Purification:	This antibody is conjugated with FITC under optimum conditions. The conjugate is purified by size-exclusion chromatography.
Product Form:	Liquid
Formulation:	Supplied in Phosphate Buffered Saline with 15 mM Sodium Azide.
Storage:	Store in the dark at 2-8°C. Do not freeze!
Disclaimer:	This product is for research use only. It is not intended for diagnostic or therapeutic use.

Anti-CD14 Antibody [MEM-18] (FITC) (A85708)

Images:



Surface staining of human peripheral blood leukocytes using Anti-CD14 Antibody (A85708).