

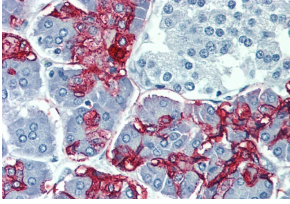
Anti-Blood Group Lewis a Antibody [7LE] (A85793)

Specifications:

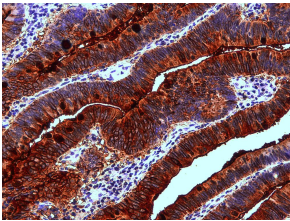
Name:	Anti-Blood Group Lewis a Antibody [7LE]
Description:	Mouse monoclonal [7LE] antibody to Blood Group Lewis a .
Specificity:	This antibody recognizes Lewis a blood group antigen, a carbohydrate determinant carried on both glycolipids and glycoproteins, expressed in colonic epithelial cells. Lewis a may be useful for detection of gastrointestinal, pancreatic and colorectal tumors.
Applications:	IHC-P, WB, ELISA
Recommended Dilutions:	IHC-P: 5 µg/ml
Reactivity:	Human
Immunogen:	Mucin isolated by size-exclusion chromatography from an ovarian cyst fluid (pure endocervical type according to the Fenoglio's classification).
Host:	Mouse
Clonality:	Monoclonal
Clone ID:	7LE
Isotype:	IgG1
Conjugate:	Unconjugated
Purification:	Protein A chromatography.
Concentration:	1 mg/ml
Purity:	> 95% (by SDS-PAGE).
Product Form:	Liquid
Formulation:	Supplied in Phosphate Buffered Saline, pH 7.4, with 15 mM Sodium Azide.
Storage:	Shipped at 4°C. Upon delivery aliquot and store at -20°C. Avoid freeze / thaw cycles.
Disclaimer:	This product is for research use only. It is not intended for diagnostic or therapeutic use.

Anti-Blood Group Lewis a Antibody [7LE] (A85793)

Images:



Immunohistochemistry staining of human pancreas (paraffin-embedded sections) with Anti-Blood Group Lewis a Antibody (A85793).



Immunohistochemistry staining of human colon adenocarcinoma (paraffin-embedded sections) with Anti-Blood Group Lewis a Antibody (A85793).