

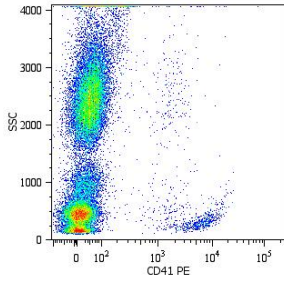
Anti-CD41 Antibody [MEM-06] (PE) (A85928)

Specifications:

Name:	Anti-CD41 Antibody [MEM-06] (PE)
Description:	Mouse monoclonal [MEM-06] antibody to CD41 (PE).
Specificity:	This antibody reacts with an extracellular epitope of CD41, a transmembrane glycoprotein, of the integrin family, composed of two chains GPIIb alpha (heavy chain, 120 kDa) and GPIIb beta (light chain, 23 kDa). CD41 is mainly expressed on platelets and megakaryocytes.
Applications:	Flow Cytometry
Recommended Dilutions:	Flow Cytometry: This reagent is designed for analysis of human blood cells using 20 µl reagent / 100 µl of whole blood or 10 ⁶ cells in a suspension.
Reactivity:	Human
Immunogen:	Leukocytes from a patient suffering from a LGL Type leukemia.
Host:	Mouse
Clonality:	Monoclonal
Clone ID:	MEM-06
Isotype:	IgG1
Conjugate:	PE
Purification:	This antibody is conjugated with PE under optimum conditions. The conjugate is purified by size-exclusion chromatography.
Product Form:	Liquid
Formulation:	Supplied in Phosphate Buffered Saline with 15 mM Sodium Azide.
Storage:	Store in the dark at 2-8°C. Do not freeze!
Disclaimer:	This product is for research use only. It is not intended for diagnostic or therapeutic use.

Anti-CD41 Antibody [MEM-06] (PE) (A85928)

Images:



Flow cytometric analysis of human platelets with Anti-CD41 Antibody [MEM-06] (PE).