

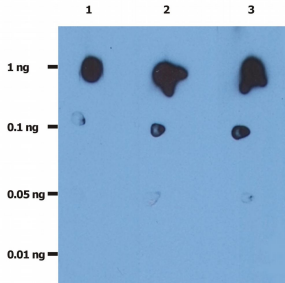
## Anti-HIV protease Antibody [1696] (A86101)

### Specifications:

Name:	Anti-HIV protease Antibody [1696]
Description:	Mouse monoclonal [1696] antibody to HIV protease.
Specificity:	This antibody recognizes the free N-terminus of mature HIV protease (HIV-1 and HIV-2), an enzyme that hydrolyzes polyproteins of HIV viruses into functional proteins. This antibody does not react with the precursor.
Applications:	ELISA, WB
Recommended Dilutions:	WB: 0.5 µg/ml
Reactivity:	Human immunodeficiency virus
Immunogen:	Bacterially expressed full-length HIV-1 protease.
Host:	Mouse
Clonality:	Monoclonal
Clone ID:	1696
Isotype:	IgG1
Conjugate:	Unconjugated
Purification:	Protein A chromatography.
Concentration:	1 mg/ml
Purity:	> 95% (by SDS-PAGE).
Product Form:	Liquid
Formulation:	Supplied in Phosphate Buffered Saline, pH 7.4, with 15 mM Sodium Azide.
Storage:	Shipped at 4°C. Upon delivery aliquot and store at -20°C. Avoid freeze / thaw cycles.
Disclaimer:	This product is for research use only. It is not intended for diagnostic or therapeutic use.

## Anti-HIV protease Antibody [1696] (A86101)

### Images:



Dot Blot analysis of recombinant HIV protease. The total amount of recombinant HIV-protease spotted on the nitrocellulose membrane are indicated in left column. Lane 1: Anti-HIV protease Antibody (A86101 | 0.2 µg/ml). Lane 2: Anti-HIV protease Antibody (A86101 | 1.0 µg/ml). Lane 3: Anti-HIV protease Antibody (A86101 | 2.0 µg/ml).