

Anti-PSMA Antibody [GCP-04] (A86232)

Specifications:

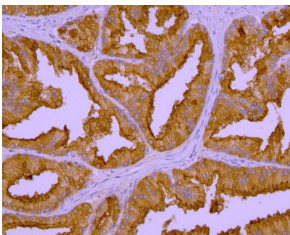
Name:	Anti-PSMA Antibody [GCP-04]
Description:	Mouse monoclonal [GCP-04] antibody to PSMA.
Specificity:	The antibody GCP-04 recognizes amino acids 100-104 of extracellular domain of denaturated glutamate carboxypeptidase II (PSMA, NAALADase, FOLH1), an approximately 95-110 kDa transmembrane glycoprotein.
Applications:	WB, IHC-P, ICC
Recommended Dilutions:	WB: 1 µg/ml
Reactivity:	Human, Porcine, Mouse, Rat
Immunogen:	Recombinant fragment of human GCPII (amino acids 44-750) produced in S2 cells.
Host:	Mouse
Clonality:	Monoclonal
Clone ID:	GCP-04
Isotype:	IgG1
Conjugate:	Unconjugated
Purification:	Protein A chromatography.
Concentration:	1 mg/ml
Purity:	> 95% (by SDS-PAGE).
Product Form:	Liquid
Formulation:	Supplied in Phosphate Buffered Saline, pH 7.4, with 15 mM Sodium Azide.
Storage:	Shipped at 4°C. Upon delivery aliquot and store at -20°C. Avoid freeze / thaw cycles.
Disclaimer:	This product is for research use only. It is not intended for diagnostic or therapeutic use.

Anti-PSMA Antibody [GCP-04] (A86232)

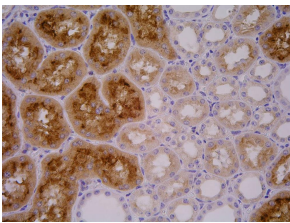
Images:



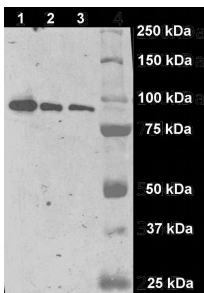
Immunohistochemistry of GCP II in human Medulla oblongata by Anti-GCP II Antibody (A86232). Mag. 40x; positive astrocytes in white matter.



Immunohistochemistry of GCP II in human prostate by Anti-GCP II Antibody (A86232). Mag. 400x; positive epithelium of the prostate glands.



Immunohistochemistry of GCP II in porcine kidney by Anti-GCP II Antibody (A86232). Highly positive proximal glomeruli.



Immunostaining of a fragment of human GCP II (amino acids 44-750) produced in S2 cells on Western blot by Anti-GCP II Antibody (A86232). Lanes 1, 2, 3 represent 800, 400 and 200 pg of the protein.