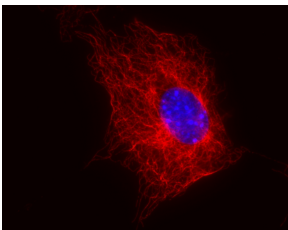


Anti-beta Tubulin Antibody [TU-06] (A86335)

Specifications:

Name:	Anti-beta Tubulin Antibody [TU-06]
Description:	Mouse monoclonal [TU-06] antibody to beta Tubulin.
Specificity:	The antibody TU-06 recognizes an epitope (aa 81-95) on phylogenetically conserved N-terminal structural domain of beta-tubulin (recognizes all beta-tubulin isoforms) in various species.
Applications:	WB, IHC-P, ICC
Recommended Dilutions:	ICC: 2 µg/ml, IHC-P: 5 µg/ml, WB: 1-2 µg/ml
Reactivity:	Human, Mouse, Rat, Bovine, Hamster
Immunogen:	Beta-subunits of porcine brain Tubulin.
Host:	Mouse
Clonality:	Monoclonal
Clone ID:	TU-06
Isotype:	IgM
Conjugate:	Unconjugated
Purification:	Purified by precipitation and chromatography.
Concentration:	1 mg/ml
Purity:	> 95% (by SDS-PAGE).
Product Form:	Liquid
Formulation:	Supplied in Tris Buffered Saline, pH 8.0, with 15 mM Sodium Azide.
Storage:	Shipped at 4°C. Upon delivery aliquot and store at -20°C. Avoid freeze / thaw cycles.
Disclaimer:	This product is for research use only. It is not intended for diagnostic or therapeutic use.

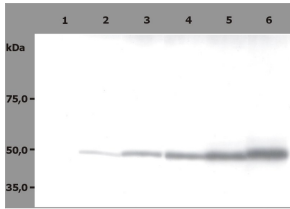
Images:



Immunofluorescence staining of 3T3 mouse embryonal fibroblast cell line using Anti-beta Tubulin Antibody (A86335) (detection by Goat Anti-Mouse IgM Antibody Cy[®]5). Nucleus is stained with DAPI (blue).

Anti-beta Tubulin Antibody [TU-06] (A86335)

Images continued:



Western Blotting analysis (reducing conditions) of HPB-ALL human peripheral blood leukemia cell line. Lane 1: Negative control. Lane 2, 3, 4, 5, 6: immunostaining with Anti-beta Tubulin Antibody (A86335) (dilutions 0.5 µg/ml, 1 µg/ml, 2 µg/ml, 4 µg/ml, 5 µg/ml).