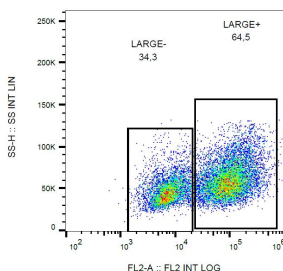


Anti-LARGE1 Antibody [LARGE-02] (PE) (A86413)

Specifications:

Name:	Anti-LARGE1 Antibody [LARGE-02] (PE)
Description:	Mouse monoclonal [LARGE-02] antibody to LARGE1 (PE).
Specificity:	The mouse monoclonal antibody LARGE-02 recognizes human LARGE1, a glycosyltransferase localizing mainly to the Golgi apparatus. Crossreactivity with LARGE2 was not determined.
Applications:	Flow Cytometry
Recommended Dilutions:	Flow Cytometry: 1-5 µg/ml
Reactivity:	Human
Immunogen:	Recombinant fragment of human LARGE1 (amino acids 35-142).
Host:	Mouse
Clonality:	Monoclonal
Clone ID:	LARGE-02
Isotype:	IgG2b
Conjugate:	PE
Purification:	This antibody is conjugated with PE under optimum conditions. The conjugate is purified by size-exclusion chromatography.
Concentration:	0.1 mg/ml
Product Form:	Liquid
Formulation:	Supplied in Phosphate Buffered Saline with 15 mM Sodium Azide.
Storage:	Store in the dark at 2-8°C. Do not freeze!
Disclaimer:	This product is for research use only. It is not intended for diagnostic or therapeutic use.

Images:



Flow cytometry analysis of LARGE1 in HEK293-LARGE1 transfectants using Anti-LARGE1 Antibody (A86413).