

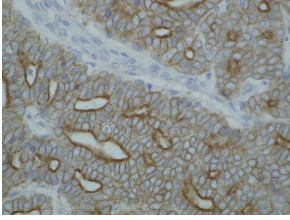
Anti-pan Cytokeratin Antibody [C-11] (A86447)

Specifications:

Name:	Anti-pan Cytokeratin Antibody [C-11]
Description:	Mouse monoclonal [C-11] antibody to pan Cytokeratin.
Specificity:	This antibody reacts with Cytokeratin peptides 4, 5, 6, 8, 10, 13, and 18. Cytokeratins are members of intermediate filaments subfamily intracellular proteins represented in epithelial tissues.
Applications:	WB, Flow Cytometry, IP, IHC-P, ICC
Recommended Dilutions:	Flow Cytometry: 1 µg/ml, IHC: 2-8 µg/ml, WB: 1-2 µg/ml
Reactivity:	Human, Rat, Goat, Mouse
Immunogen:	Keratin-enriched preparation from human epidermoid carcinoma cell line A431.
Host:	Mouse
Clonality:	Monoclonal
Clone ID:	C-11
Isotype:	IgG1
Conjugate:	Unconjugated
Purification:	Protein A chromatography.
Concentration:	1 mg/ml
Purity:	> 95% (by SDS-PAGE).
Product Form:	Liquid
Formulation:	Supplied in Phosphate Buffered Saline, pH 7.4, with 15 mM Sodium Azide.
Storage:	Shipped at 4°C. Upon delivery aliquot and store at -20°C. Avoid freeze / thaw cycles.
Disclaimer:	This product is for research use only. It is not intended for diagnostic or therapeutic use.

Anti-pan Cytokeratin Antibody [C-11] (A86447)

Images:



Detection of cytokeratin on paraffin-embedded sections of guinea pig breast carcinoma using Anti-Cytokeratin (Pan Reactive) Antibody (A86447).