

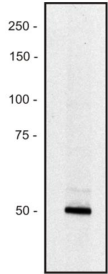
## Anti-PCLO Antibody [PCLO-01] (A86487)

### Specifications:

Name:	Anti-PCLO Antibody [PCLO-01]
Description:	Mouse monoclonal [PCLO-01] antibody to PCLO.
Specificity:	The mouse monoclonal antibody PCLO-01 recognizes PCLO (Piccolo), a more than 400 kDa multidomain protein expressed mainly in the presynaptic cytomatrix of the neurons.
Applications:	Flow Cytometry, WB
Recommended Dilutions:	Flow Cytometry: 1-5 µg/ml
Reactivity:	Human
Immunogen:	Human recombinant PCLO protein.
Host:	Mouse
Clonality:	Monoclonal
Clone ID:	PCLO-01
Isotype:	IgG1
Conjugate:	Unconjugated
Purification:	Protein A chromatography.
Concentration:	1 mg/ml
Purity:	> 95% (by SDS-PAGE).
Product Form:	Liquid
Formulation:	Supplied in Phosphate Buffered Saline, pH 7.4, with 15 mM Sodium Azide.
Storage:	Shipped at 4°C. Upon delivery aliquot and store at -20°C. Avoid freeze / thaw cycles.
Disclaimer:	This product is for research use only. It is not intended for diagnostic or therapeutic use.

## Anti-PCLO Antibody [PCLO-01] (A86487)

### Images:



Western blot of human REH erythroid cell line lysate (1% laurylmaltoside); non-reduced sample, immunostained by Anti-PCLO Antibody (A86487) and Goat Anti-Mouse IgG Antibody (H+L) (HRP). The zone evidently corresponds to a small splice variant of the PCLO protein present in this type of cell (see Uniprot database, Genome Res. 14:2121-2127(2004)); the major form (over 500 kDa) expressed in neurons is too large for analysis by Western blotting.