

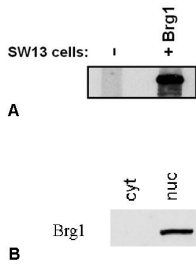
Anti-BRG1 Antibody [BRG-01] (A86541)

Specifications:

Name:	Anti-BRG1 Antibody [BRG-01]
Description:	Mouse monoclonal [BRG-01] antibody to BRG1.
Specificity:	The antibody BRG-01 recognizes an epitope within C-terminal part of human Brg1, a 205 kDa catalytic subunit of SWI2/SNF2-family chromatin-remodeling complexes.
Applications:	WB
Recommended Dilutions:	WB: 10 µg/ml
Reactivity:	Human
Immunogen:	Bacterially produced GST-fused protein representing 242 C-terminal amino acids of human Brg1.
Host:	Mouse
Clonality:	Monoclonal
Clone ID:	BRG-01
Isotype:	IgG2a
Conjugate:	Unconjugated
Purification:	Protein A chromatography.
Concentration:	1 mg/ml
Purity:	> 95% (by SDS-PAGE).
Product Form:	Liquid
Formulation:	Supplied in Phosphate Buffered Saline, pH 7.4, with 15 mM Sodium Azide.
Storage:	Shipped at 4°C. Upon delivery aliquot and store at -20°C. Avoid freeze / thaw cycles.
Disclaimer:	This product is for research use only. It is not intended for diagnostic or therapeutic use.

Anti-BRG1 Antibody [BRG-01] (A86541)

Images:



Immunostaining of Brg1 by Anti-Brg1 Antibody (A86541). A - Brg1-negative SW13 cells were transfected with Brg1-expression plasmid and analysed by Western blotting for Brg1 expression. B - HEK293 cytoplasmic (cyt) and nuclear (nuc) lysates were analysed by Western blotting for Brg1 presence.