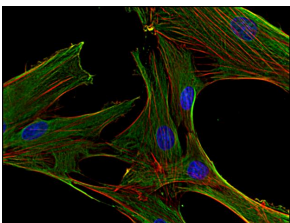


Anti-Clathrin Heavy Chain Antibody [BF-06] (A86631)

Specifications:

| | |
|------------------------|--|
| Name: | Anti-Clathrin Heavy Chain Antibody [BF-06] |
| Description: | Mouse monoclonal [BF-06] antibody to Clathrin Heavy Chain. |
| Specificity: | The antibody BF-06 recognizes clathrin heavy chain, an ubiquitously expressed 180 kDa protein involved in receptor-mediated endocytosis. |
| Applications: | Flow Cytometry, IP, WB, ICC, ELISA |
| Recommended Dilutions: | Flow Cytometry: 2-5 µg/ml |
| Reactivity: | Human, Porcine, Mouse, Rat, Bovine |
| Immunogen: | Unfortunately, this information is considered to be commercially sensitive. |
| Host: | Mouse |
| Clonality: | Monoclonal |
| Clone ID: | BF-06 |
| Isotype: | IgM |
| Conjugate: | Unconjugated |
| Purification: | Purified by precipitation and chromatography. |
| Concentration: | 1 mg/ml |
| Purity: | > 95% (by SDS-PAGE). |
| Product Form: | Liquid |
| Formulation: | Supplied in Tris Buffered Saline, pH 8.0, with 15 mM Sodium Azide. |
| Storage: | Shipped at 4°C. Upon delivery aliquot and store at -20°C. Avoid freeze / thaw cycles. |
| Disclaimer: | This product is for research use only. It is not intended for diagnostic or therapeutic use. |

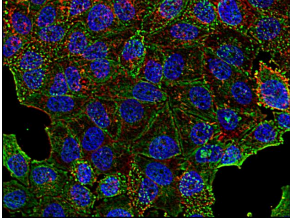
Images:



Immunofluorescence staining of clathrin in human primary fibroblasts using Anti-Clathrin Heavy Chain Antibody (A86631 | green). Actin cytoskeleton decorated by phalloidin (red) and cell nuclei stained with DAPI (blue).

Anti-Clathrin Heavy Chain Antibody [BF-06] (A86631)

Images continued:



Immunofluorescence staining of clathrin in human HeLa cell line using Anti-Clathrin Heavy Chain Antibody (A86631 | green). Actin cytoskeleton decorated by phalloidin (red) and cell nuclei stained with DAPI (blue).