

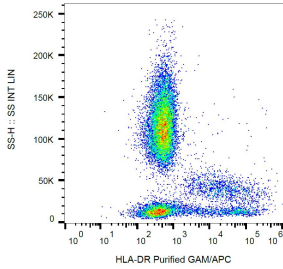
Anti-HLA DR Antibody [L243] (A86736)

Specifications:

Name:	Anti-HLA DR Antibody [L243]
Description:	Mouse monoclonal [L243] antibody to HLA DR.
Specificity:	This antibody recognizes specifically an extracellular epitope on HLA DR molecules, both peptide-loaded and empty.
Applications:	Flow Cytometry, IP, WB, IHC-P, IHC-Fr, ICC
Recommended Dilutions:	Flow Cytometry: 1-4 µg/ml
Reactivity:	Human, Canine, Non-Human Primates
Immunogen:	Human B lymphocytes.
Host:	Mouse
Clonality:	Monoclonal
Clone ID:	L243
Isotype:	IgG2a
Light Chains:	kappa
Conjugate:	Unconjugated
Purification:	Protein A chromatography.
Concentration:	1 mg/ml
Purity:	> 95% (by SDS-PAGE).
Product Form:	Liquid
Formulation:	Supplied in Phosphate Buffered Saline, pH 7.4, with 15 mM Sodium Azide.
Storage:	Shipped at 4°C. Upon delivery aliquot and store at -20°C. Avoid freeze / thaw cycles.
Disclaimer:	This product is for research use only. It is not intended for diagnostic or therapeutic use.

Anti-HLA DR Antibody [L243] (A86736)

Images:



Surface staining of HLA-DR in human peripheral blood with Anti-HLA DR Antibody (A86736).