

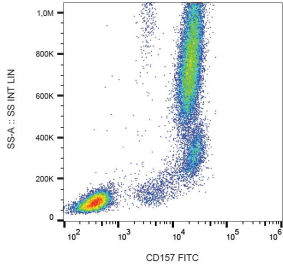
## Anti-CD157 Antibody [SY11B5] (FITC) (A86830)

### Specifications:

Name:	Anti-CD157 Antibody [SY11B5] (FITC)
Description:	Mouse monoclonal [SY11B5] antibody to CD157 (FITC).
Specificity:	The mouse monoclonal antibody SY11B5 recognizes CD157, an approximately 45 kDa GPI-anchored protein expressed mainly on monocytes, macrophages, granulocytes and bone marrow stromal cells.
Applications:	Flow Cytometry
Recommended Dilutions:	Flow Cytometry: This reagent is designed for analysis of human blood cells using 4 µl reagent / 100 µl of whole blood or 10 <sup>6</sup> cells in a suspension.
Reactivity:	Human, Non-Human Primates
Immunogen:	Human CD157.
Host:	Mouse
Clonality:	Monoclonal
Clone ID:	SY11B5
Isotype:	IgG1
Light Chains:	kappa
Conjugate:	FITC
Purification:	This antibody is conjugated with FITC under optimum conditions. The conjugate is purified by size-exclusion chromatography.
Product Form:	Liquid
Formulation:	Supplied in Phosphate Buffered Saline with 15 mM Sodium Azide.
Storage:	Store in the dark at 2-8°C. Do not freeze!
Disclaimer:	This product is for research use only. It is not intended for diagnostic or therapeutic use.

## Anti-CD157 Antibody [SY11B5] (FITC) (A86830)

### Images:



Surface staining of human peripheral blood leukocytes with Anti-CD157 Antibody (A86830).