

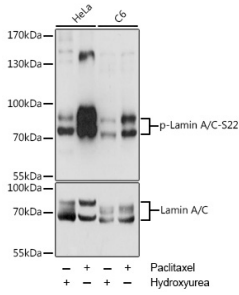
## Anti-Lamin A (phospho Ser22) Antibody (A87589)

### Specifications:

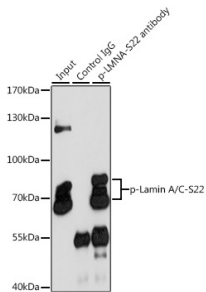
Name:	Anti-Lamin A (phospho Ser22) Antibody
Description:	Rabbit polyclonal antibody to Lamin A (phospho Ser22).
Applications:	WB, IP
Recommended Dilutions:	WB: 1:500-1:2,000, IP: 1:50-1:100
Reactivity:	Human, Rat
Immunogen:	A synthetic phosphorylated peptide around S22 of human Lamin A (NP_005563.1).
Sequence:	PLSPT
Host:	Rabbit
Clonality:	Polyclonal
Isotype:	IgG
Conjugate:	Unconjugated
Purification:	Affinity purification.
Molecular Weight:	69 kDa / 78 kDa
Product Form:	Liquid
Formulation:	Supplied in Phosphate Buffered Saline, pH 7.3, with 50% Glycerol and 0.01% Thiomersal.
Storage:	Shipped at 4°C. Upon delivery aliquot and store at -20°C. Avoid freeze / thaw cycles.
Disclaimer:	This product is for research use only. It is not intended for diagnostic or therapeutic use.

## Anti-Lamin A (phospho Ser22) Antibody (A87589)

### Images:



Western blot analysis of extracts of various cell lines, using Anti-Lamin A (phospho Ser22) Antibody (A87589) at 1:2,000 dilution or Lamin A antibody (A0249). HeLa cells were treated by Hydroxyurea (4 mM) at 37°C for 20 hours or treated by Paclitaxel (100 nM/mL) at 37°C for 20 hours. C6 cells were treated by Hydroxyurea (4 mM) at 37°C for 20 hours or treated by Paclitaxel (100 nM) at 37°C for 20 hours. The secondary antibody was Goat Anti-Rabbit IgG H&L Antibody (HRP) at 1:10,000 dilution. Lysates/proteins were present at 25µg per lane. The blocking buffer used was 3% BSA. Detection was with a ECL Enhanced Kit (RM00021). Exposure time: 1s.



Immunoprecipitation analysis of 200µg extracts of HeLa cells using 3µg of Anti-Lamin A (phospho Ser22) Antibody (A87589). This Western blot was performed on the immunoprecipitate using Anti-Lamin A (phospho Ser22) Antibody (A87589) at a dilution of 1:1000. HeLa cells were treated by Paclitaxel (100 nM/mL) at 37°C for 20 hours.