

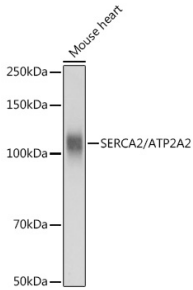
Anti-SERCA2 ATPase Antibody (A88093)

Specifications:

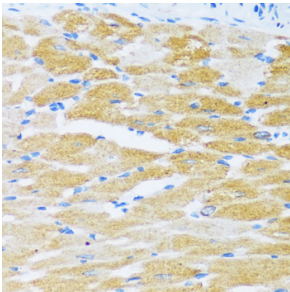
Name:	Anti-SERCA2 ATPase Antibody
Description:	Rabbit polyclonal antibody to SERCA2 ATPase.
Applications:	WB, IHC
Recommended Dilutions:	WB: 1:500-1:2,000, IHC: 1:50-1:100
Reactivity:	Mouse, Rat
Immunogen:	Recombinant fusion protein containing a sequence corresponding to amino acids 111-253 of human SERCA2/ATP2A2 (NP_733765.1).
Sequence:	NAENAIEALKEYEPENMGKVYRQDRKSVQRIKAKDIVPGDIVEIAVGDKVPADIRLTSI KSTTLRVDQSILTGESVSVIKHTDPVPDPRAVNQDKKNMLFSGTNIAAGKAMGVVAT GVNTEIGKIRDEMVAEQERTPLQQKL
Host:	Rabbit
Clonality:	Polyclonal
Isotype:	IgG
Conjugate:	Unconjugated
Purification:	Affinity purification.
Molecular Weight:	114 kDa
Product Form:	Liquid
Formulation:	Supplied in Phosphate Buffered Saline, pH 7.3, with 50% Glycerol and 0.01% Thiomersal.
Storage:	Shipped at 4°C. Upon delivery aliquot and store at -20°C. Avoid freeze / thaw cycles.
Disclaimer:	This product is for research use only. It is not intended for diagnostic or therapeutic use.

Anti-SERCA2 ATPase Antibody (A88093)

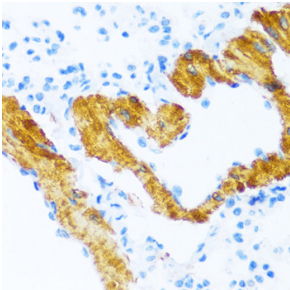
Images:



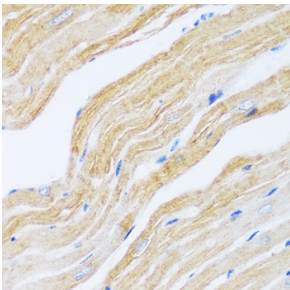
Western blot analysis of extracts of Mouse heart, using Anti-SERCA2 ATPase Antibody (A88093) at 1:3,000 dilution. The secondary antibody was Goat Anti-Rabbit IgG H&L Antibody (HRP) at 1:10,000 dilution. Lysates/proteins were present at 25 μ g per lane. The blocking buffer used was 3% non-fat dry milk in TBST. Detection was with a ECL Basic Kit. Exposure time: 1s.



Immunohistochemistry analysis of paraffin-embedded rat heart using Anti-SERCA2 ATPase Antibody (A88093) at a dilution of 1:100 (40x lens).



Immunohistochemistry analysis of paraffin-embedded mouse lung using Anti-SERCA2 ATPase Antibody (A88093) at a dilution of 1:100 (40x lens).



Immunohistochemistry analysis of paraffin-embedded mouse heart using Anti-SERCA2 ATPase Antibody (A88093) at a dilution of 1:100 (40x lens).