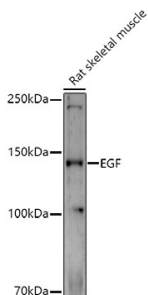


Anti-EGF Antibody (A88178)

Specifications:

Name:	Anti-EGF Antibody
Description:	Rabbit polyclonal antibody to EGF.
Applications:	WB, ICC/IF
Recommended Dilutions:	WB: 1:500-1:1,000, ICC/IF: 1:50-1:200
Reactivity:	Human, Mouse, Rat
Immunogen:	A synthetic peptide corresponding to a sequence within amino acids 900-1000 of human EGF (NP_001954.2).
Sequence:	SEGYQGDGIHCLDIDECQLGEHSCGENASCTNTEGGYTMCAGRLSEPLGICPDSTPP PHLREDDHHYSVRNSDSECPLSHDGYCLHDGVCMYIEALDKYA
Host:	Rabbit
Clonality:	Polyclonal
Isotype:	IgG
Conjugate:	Unconjugated
Purification:	Affinity purification.
Molecular Weight:	134 kDa
Product Form:	Liquid
Formulation:	Supplied in Phosphate Buffered Saline, pH 7.3, with 50% Glycerol and 0.01% Thiomersal.
Storage:	Shipped at 4°C. Upon delivery aliquot and store at -20°C. Avoid freeze / thaw cycles.
Disclaimer:	This product is for research use only. It is not intended for diagnostic or therapeutic use.

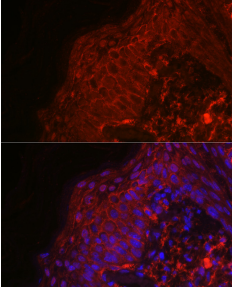
Images:



Western blot analysis of extracts of Rat skeletal muscle, using Anti-EGF Antibody (A88178) at 1:1,000 dilution. The secondary antibody was Goat Anti-Rabbit IgG H&L Antibody (HRP) at 1:10,000 dilution. Lysates/proteins were present at 25µg per lane. The blocking buffer used was 3% non-fat dry milk in TBST. Detection was with a ECL Enhanced Kit (RM00021). Exposure time: 60s.

Anti-EGF Antibody (A88178)

Images continued:



Immunofluorescence analysis of human skin using Anti-EGF Antibody (A88178) at a dilution of 1:100 (40x lens). DAPI was used to stain the cell nuclei (blue).