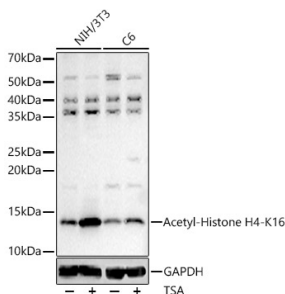


Anti-Histone H4 (acetyl Lys16) Antibody (A88199)

Specifications:

Name:	Anti-Histone H4 (acetyl Lys16) Antibody
Description:	Rabbit polyclonal antibody to Histone H4 (acetyl Lys16).
Applications:	WB, ICC/IF
Recommended Dilutions:	WB: 1:100-1:500, ICC/IF: 1:50-1:200
Reactivity:	Human, Mouse, Rat
Immunogen:	A synthetic acetylated peptide around K16 of human Histone H4 (NP_001029249.1).
Sequence:	GGAKR
Host:	Rabbit
Clonality:	Polyclonal
Isotype:	IgG
Conjugate:	Unconjugated
Purification:	Affinity purification.
Molecular Weight:	11 kDa
Product Form:	Liquid
Formulation:	Supplied in Phosphate Buffered Saline, pH 7.3, with 50% Glycerol and 0.05% Proclin 300.
Storage:	Shipped at 4°C. Upon delivery aliquot and store at -20°C. Avoid freeze / thaw cycles.
Disclaimer:	This product is for research use only. It is not intended for diagnostic or therapeutic use.

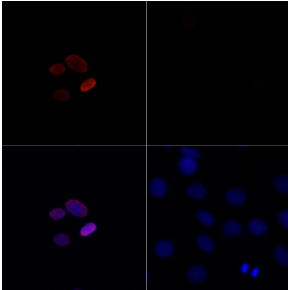
Images:



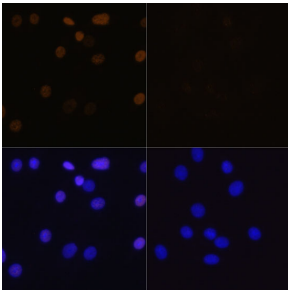
Western blot analysis of various lysates, using Anti-Histone H4 (acetyl Lys16) Antibody (A88199) at 1:400 dilution. NIH/3T3 and C6 cells were treated by TSA (1 μ M) at 37°C for 18 hours. The secondary antibody was Goat Anti-Rabbit IgG H&L Antibody (HRP) at 1:10,000 dilution. Lysates/proteins were present at 25 μ g per lane. The blocking buffer used was 3% non-fat dry milk in TBST. Detection was with a ECL Basic Kit. Exposure time: 90s.

Anti-Histone H4 (acetyl Lys16) Antibody (A88199)

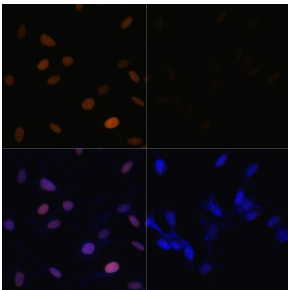
Images continued:



Immunofluorescence analysis of C6 cells treated by TSA (upper left) and untreated C6 cells (upper right) using Anti-Histone H4 (acetyl Lys16) Antibody (A88199), at a dilution of 1:100, (Red). DAPI was used to stain the cell nuclei (blue).



Immunofluorescence analysis of C6 cells using Anti-Histone H4 (acetyl Lys16) Antibody (A88199) at a dilution of 1:100. DAPI was used to stain the cell nuclei (blue). C6 cells were treated by TSA (1 μ M) at 37°C for 18 hours. DAPI was used to stain the cell nuclei (blue).



Immunofluorescence analysis of NIH/3T3 cells using Anti-Histone H4 (acetyl Lys16) Antibody (A88199) at a dilution of 1:100. DAPI was used to stain the cell nuclei (blue). NIH/3T3 cells were treated by TSA (1 μ M) at 37°C for 18 hours. DAPI was used to stain the cell nuclei (blue).