

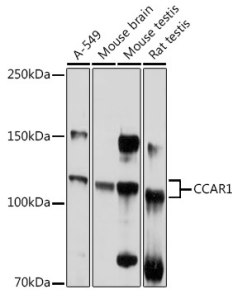
Anti-DIS Antibody (A88366)

Specifications:

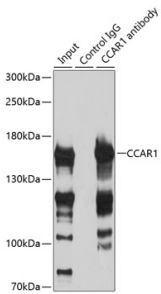
Name:	Anti-DIS Antibody
Description:	Rabbit polyclonal antibody to DIS.
Applications:	WB, IP
Recommended Dilutions:	WB: 1:500-1:1,000, IP: 1:50-1:100
Reactivity:	Human, Mouse, Rat
Immunogen:	Recombinant fusion protein containing a sequence corresponding to amino acids 1-200 of human CCAR1 (NP_060707.2).
Sequence:	MAQFGGQKNPPWATQFTATAVSQPAALGVQQPSLLGASPTIYTQQTALAAAGLTTQTP ANYQLTQTAALQQQAAAAAAAAALQQQYSQPQQALYSVQQQLQQPQQTLLTQPAVALPTS LSLSTPQPTAQITVSYPTPRSSQQQTQPQKQRVFTGVVTKLHDTFGFVDEDVFFQLSA VKGKTPQVGDRVLVEATYNPNMPFKW
Host:	Rabbit
Clonality:	Polyclonal
Isotype:	IgG
Conjugate:	Unconjugated
Purification:	Affinity purification.
Molecular Weight:	132 kDa
Product Form:	Liquid
Formulation:	Supplied in Phosphate Buffered Saline, pH 7.3, with 50% Glycerol and 0.02% Sodium Azide.
Storage:	Shipped at 4°C. Upon delivery aliquot and store at -20°C. Avoid freeze / thaw cycles.
Disclaimer:	This product is for research use only. It is not intended for diagnostic or therapeutic use.

Anti-DIS Antibody (A88366)

Images:



Western blot analysis of extracts of various cell lines, using Anti-DIS Antibody (A88366) at 1:1,000 dilution. The secondary antibody was Goat Anti-Rabbit IgG H&L Antibody (HRP) at 1:10,000 dilution. Lysates/proteins were present at 25µg per lane. The blocking buffer used was 3% non-fat dry milk in TBST. Detection was with a ECL Basic Kit. Exposure time: 5s.



Immunoprecipitation analysis of 200µg extracts of HeLa cells using 3µg of Anti-DIS Antibody (A88366). This Western blot was performed on the immunoprecipitate using Anti-DIS Antibody (A88366) at a dilution of 1:500.