

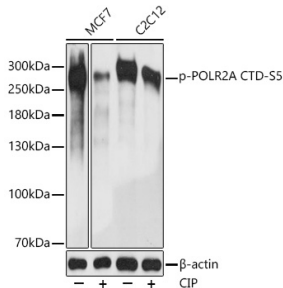
Anti-RNA polymerase II CTD repeat YSPTSPS (phospho Ser5) Antibody (A88928)

Specifications:

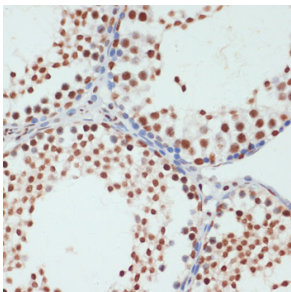
Name:	Anti-RNA polymerase II CTD repeat YSPTSPS (phospho Ser5) Antibody
Description:	Rabbit polyclonal antibody to RNA polymerase II CTD repeat YSPTSPS (phospho Ser5).
Applications:	WB, IHC
Recommended Dilutions:	WB: 1:500-1:1,000, IHC: 1:50-1:100
Reactivity:	Human, Mouse, Rat
Immunogen:	A phospho specific peptide corresponding to residues surrounding S5 of human POLR2A CTD repeat YSPTSPS.
Sequence:	PTSPS
Host:	Rabbit
Clonality:	Polyclonal
Isotype:	IgG
Conjugate:	Unconjugated
Purification:	Affinity purification.
Molecular Weight:	270 kDa
Product Form:	Liquid
Formulation:	Supplied in Phosphate Buffered Saline, pH 7.3, with 50% Glycerol and 0.01% Thiomersal.
Storage:	Shipped at 4°C. Upon delivery aliquot and store at -20°C. Avoid freeze / thaw cycles.
Disclaimer:	This product is for research use only. It is not intended for diagnostic or therapeutic use.

Anti-RNA polymerase II CTD repeat YSPTSPS (phospho Ser5) Antibody (A88928)

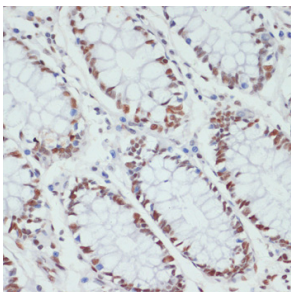
Images:



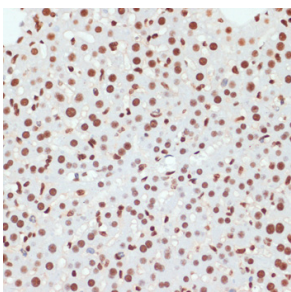
Western blot analysis of extracts of various cell lines, using Anti-RNA polymerase II CTD repeat YSPTSPS (phospho Ser5) Antibody (A88928) at 1:1,000 dilution. MCF7 and C2C12 cells were treated by CIP(20uL/400ul) at 37°C for 1 hour. The secondary antibody was Goat Anti-Rabbit IgG H&L Antibody (HRP) at 1:10,000 dilution. Lysates/proteins were present at 25µg per lane. The blocking buffer used was 3% non-fat dry milk in TBST. Detection was with a ECL Basic Kit. Exposure time: 1s.



Immunohistochemistry analysis of paraffin-embedded rat testis using Anti-RNA polymerase II CTD repeat YSPTSPS (phospho Ser5) Antibody (A88928) at a dilution of 1:100 (40x lens). Perform microwave antigen retrieval with 10 mM Tris/EDTA buffer pH 9.0 before commencing with IHC staining protocol.



Immunohistochemistry analysis of paraffin-embedded human colon tissue using Anti-RNA polymerase II CTD repeat YSPTSPS (phospho Ser5) Antibody (A88928) at a dilution of 1:100 (40x lens). Perform microwave antigen retrieval with 10 mM Tris/EDTA buffer pH 9.0 before commencing with IHC staining protocol.



Immunohistochemistry analysis of paraffin-embedded mouse liver using Anti-RNA polymerase II CTD repeat YSPTSPS (phospho Ser5) Antibody (A88928) at a dilution of 1:100 (40x lens). Perform microwave antigen retrieval with 10 mM Tris/EDTA buffer pH 9.0 before commencing with IHC staining protocol.