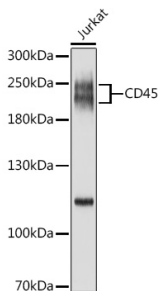


Anti-CD45 Antibody (A88986)

Specifications:

Name:	Anti-CD45 Antibody
Description:	Rabbit polyclonal antibody to CD45.
Applications:	WB, ICC/IF, IP
Recommended Dilutions:	WB: 1:500-1:1,000, ICC/IF: 1:50-1:200, IP: 1:500-1:1,000
Reactivity:	Human, Mouse, Rat
Immunogen:	Recombinant fusion protein containing a sequence corresponding to amino acids 1210-1306 of human CD45 (NP_002829.3).
Sequence:	GMVSTFEQYQFLYDVIASSTYPAQNGQVKKNHQQEDKIEFDNEVDKVKQDANCVNPLGA PEKLPEAKEQAEGSEPTSGTEGPEHSVNGPASPALNQQS
Host:	Rabbit
Clonality:	Polyclonal
Isotype:	IgG
Conjugate:	Unconjugated
Purification:	Affinity purification.
Molecular Weight:	200 - 250 kDa
Product Form:	Liquid
Formulation:	Supplied in Phosphate Buffered Saline, pH 7.3, with 50% Glycerol and 0.01% Thiomersal.
Storage:	Shipped at 4°C. Upon delivery aliquot and store at -20°C. Avoid freeze / thaw cycles.
Disclaimer:	This product is for research use only. It is not intended for diagnostic or therapeutic use.

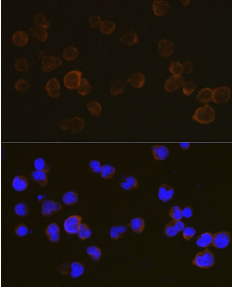
Images:



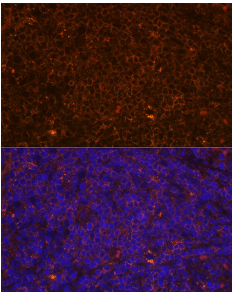
Western blot analysis of extracts of Jurkat cells, using Anti-CD45 Antibody (A88986) at 1:1,000 dilution. The secondary antibody was Goat Anti-Rabbit IgG H&L Antibody (HRP) at 1:10,000 dilution. Lysates/proteins were present at 25µg per lane. The blocking buffer used was 3% non-fat dry milk in TBST. Detection was with a ECL Basic Kit. Exposure time: 1s.

Anti-CD45 Antibody (A88986)

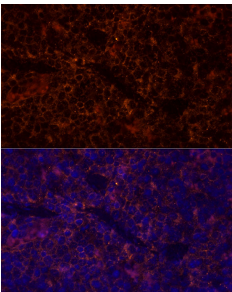
Images continued:



Immunofluorescence analysis of Jurkat cells using Anti-CD45 Antibody (A88986) at a dilution of 1:100 (40x lens). DAPI was used to stain the cell nuclei (blue).



Immunofluorescence analysis of rat spleen cells using Anti-CD45 Antibody (A88986) at a dilution of 1:100 (40x lens). DAPI was used to stain the cell nuclei (blue).



Immunofluorescence analysis of mouse spleen cells using Anti-CD45 Antibody (A88986) at a dilution of 1:100 (40x lens). DAPI was used to stain the cell nuclei (blue).