

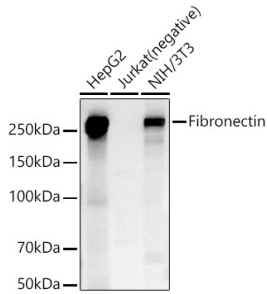
## Anti-Fibronectin Antibody (A89094)

### Specifications:

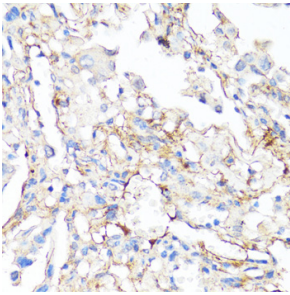
Name:	Anti-Fibronectin Antibody
Description:	Rabbit polyclonal antibody to Fibronectin.
Applications:	WB, IHC, ICC/IF
Recommended Dilutions:	WB: 1:500-1:1,000, IHC: 1:50-1:200, ICC/IF: 1:50-1:200
Reactivity:	Human, Mouse, Rat
Immunogen:	Recombinant fusion protein containing a sequence corresponding to amino acids 2200-2355 of human Fibronectin (NP_002017.1).
Sequence:	LLCQCLGFGSGHFRCSSRWCHDNGVNYKIGEKWDRQGENGQMMMSCTCLGNGKGEFKC DPHEATCYDDGKTYHVGEQWQKEYLGAICSCTCFGGQRGWRCDNCRRPGGEPSPGTT GQSYNQYSQRYHQRTNTNVNCPICFMPLDVQADREDSRE
Host:	Rabbit
Clonality:	Polyclonal
Isotype:	IgG
Conjugate:	Unconjugated
Purification:	Affinity purification.
Molecular Weight:	272 kDa
Product Form:	Liquid
Formulation:	Supplied in Phosphate Buffered Saline, pH 7.3, with 50% Glycerol and 0.05% Proclin 300.
Storage:	Shipped at 4°C. Upon delivery aliquot and store at -20°C. Avoid freeze / thaw cycles.
Disclaimer:	This product is for research use only. It is not intended for diagnostic or therapeutic use.

## Anti-Fibronectin Antibody (A89094)

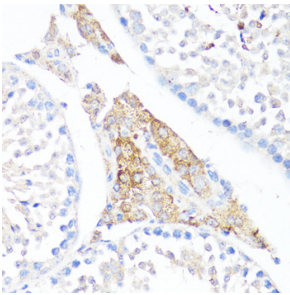
### Images:



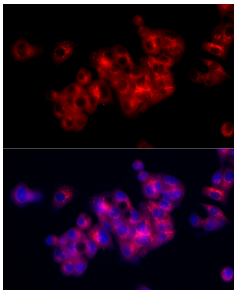
Western blot analysis of various lysates, using Anti-Fibronectin Antibody (A89094) at 1:600 dilution. The secondary antibody was Goat Anti-Rabbit IgG H&L Antibody (HRP) at 1:10,000 dilution. Lysates/proteins were present at 25 $\mu$ g per lane. The blocking buffer used was 3% non-fat dry milk in TBST. Detection was with a ECL Basic Kit. Exposure time: 10s.



Immunohistochemistry analysis of paraffin-embedded human lung cancer using Anti-Fibronectin Antibody (A89094) at a dilution of 1:100 (40x lens). Perform microwave antigen retrieval with 10 mM PBS buffer pH 7.2 before commencing with IHC staining protocol.



Immunohistochemistry analysis of paraffin-embedded mouse testis leydig using Anti-Fibronectin Antibody (A89094) at a dilution of 1:100 (40x lens). Perform microwave antigen retrieval with 10 mM PBS buffer pH 7.2 before commencing with IHC staining protocol.



Immunofluorescence analysis of HepG2 cells using Anti-Fibronectin Antibody (A89094) at a dilution of 1:50 (40x lens). DAPI was used to stain the cell nuclei (blue).