

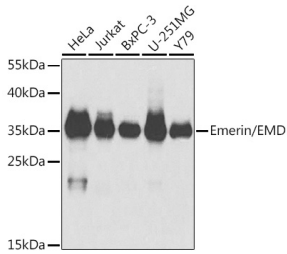
Anti-Emerin Antibody (A89365)

Specifications:

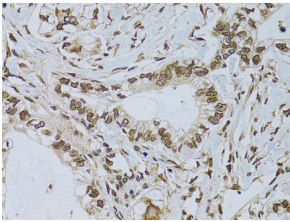
Name:	Anti-Emerin Antibody
Description:	Rabbit polyclonal antibody to Emerin.
Applications:	WB, IHC, ICC/IF
Recommended Dilutions:	WB: 1:500-1:2,000, IHC: 1:50-1:200, ICC/IF: 1:50-1:200
Reactivity:	Human, Mouse
Immunogen:	Recombinant fusion protein containing a sequence corresponding to amino acids 1-220 of human Emerin/Emerin/EMD (NP_000108.1).
Sequence:	MDNYADLSDELTTLLRRYNIPHGPVVGSTRRLYEKKIFEYETQRRRLSPPSSSAASS YSFSDLNSTRGDADMYDLPKKEDALLYQSKGYNDYEEESYFTTRTYGEPESAGPSRA VRQSVTSFPDADAFHHQVHDDLLSSSEEECKDRERPMYGRDSAYQSITHYRPVSASR SSLDLSYYPTSSSTFSMSSSSSSSWLTRRAIRPENRAPGAGLGQD
Host:	Rabbit
Clonality:	Polyclonal
Isotype:	IgG
Conjugate:	Unconjugated
Purification:	Affinity purification.
Molecular Weight:	35 kDa
Product Form:	Liquid
Formulation:	Supplied in Phosphate Buffered Saline, pH 7.3, with 50% Glycerol and 0.02% Sodium Azide.
Storage:	Shipped at 4°C. Upon delivery aliquot and store at -20°C. Avoid freeze / thaw cycles.
Disclaimer:	This product is for research use only. It is not intended for diagnostic or therapeutic use.

Anti-Emerin Antibody (A89365)

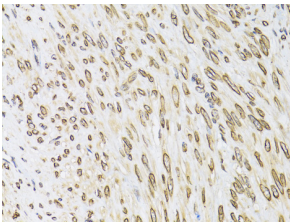
Images:



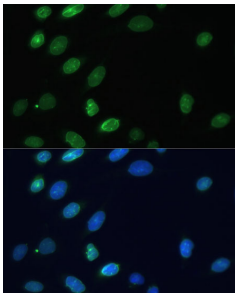
Western blot analysis of extracts of various cell lines, using Anti-Emerin Antibody (A89365) at 1:1,000 dilution. The secondary antibody was Goat Anti-Rabbit IgG H&L Antibody (HRP) at 1:10,000 dilution. Lysates/proteins were present at 25 μ g per lane. The blocking buffer used was 3% non-fat dry milk in TBST.



Immunohistochemistry analysis of paraffin-embedded human gastric cancer using Anti-Emerin Antibody (A89365) at a dilution of 1:100 (40x lens). Perform microwave antigen retrieval with 10 mM PBS buffer pH 7.2 before commencing with IHC staining protocol.



Immunohistochemistry analysis of paraffin-embedded human uterine cancer using Anti-Emerin Antibody (A89365) at a dilution of 1:100 (40x lens). Perform microwave antigen retrieval with 10 mM PBS buffer pH 7.2 before commencing with IHC staining protocol.



Immunofluorescence analysis of U-2 OS cells using Anti-Emerin Antibody (A89365) at a dilution of 1:100. DAPI was used to stain the cell nuclei (blue).