

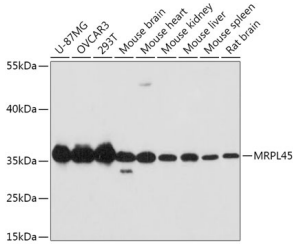
## Anti-MRPL45 Antibody (A89411)

### Specifications:

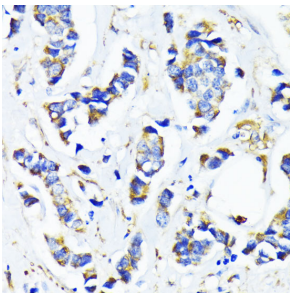
|                        |  |
|------------------------|--|
| Name:                  | Anti-MRPL45 Antibody   |
| Description:           | Rabbit polyclonal antibody to MRPL45.  |
| Applications:          | WB, IHC, ICC/IF  |
| Recommended Dilutions: | WB: 1:500-1:2,000, IHC: 1:50-1:200, ICC/IF: 1:50-1:200   |
| Reactivity:            | Human, Mouse, Rat  |
| Immunogen:             | Recombinant fusion protein containing a sequence corresponding to amino acids 57-306 of human MRPL45 (NP_115727.5).  |
| Sequence:              | <p>MQHARKAGLVIPPEKSDRSIHLACTAGIFDAYVPPEGDARISSLSKEGLIERTERMKK<br/>TMASQVSIRRIKDYDANFKIKDFPEKAKDIFIEAHLCLNNSDHDLHTLVTEHCFPDM<br/>TWDIKYKTVRWSFVESLEPSHVVQVRCSSMMNQGNVYGQITVRMHTRQTLAIYDRFGR<br/>LMYGQEDVPKDVLEYVVFEEKQLTNPYGSWRMHTKIVPPWAPPKQPILKTMIPGPQLK<br/>PEEEYEEAQGEAQKPQLA</p> |
| Host:                  | Rabbit   |
| Clonality:             | Polyclonal   |
| Isotype:               | IgG  |
| Conjugate:             | Unconjugated   |
| Purification:          | Affinity purification.   |
| Molecular Weight:      | 35 kDa   |
| Product Form:          | Liquid   |
| Formulation:           | Supplied in Phosphate Buffered Saline, pH 7.3, with 50% Glycerol and 0.01% Thiomersal.   |
| Storage:               | Shipped at 4°C. Upon delivery aliquot and store at -20°C. Avoid freeze / thaw cycles.  |
| Disclaimer:            | This product is for research use only. It is not intended for diagnostic or therapeutic use.   |

## Anti-MRPL45 Antibody (A89411)

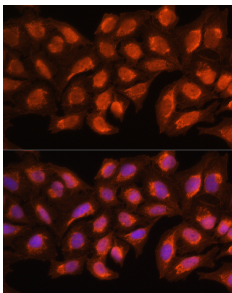
### Images:



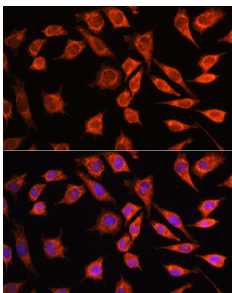
Western blot analysis of extracts of various cell lines, using Anti-MRPL45 Antibody (A89411) at 1:1,000 dilution. The secondary antibody was Goat Anti-Rabbit IgG H&L Antibody (HRP) at 1:10,000 dilution. Lysates/proteins were present at 25 $\mu$ g per lane. The blocking buffer used was 3% non-fat dry milk in TBST. Detection was with a ECL Basic Kit. Exposure time: 90s.



Immunohistochemistry analysis of paraffin-embedded human breast cancer tissue using Anti-MRPL45 Antibody (A89411) at a dilution of 1:100 (40x lens). Perform microwave antigen retrieval with 10 mM PBS buffer pH 7.2 before commencing with IHC staining protocol.



Immunofluorescence analysis of HeLa cells using Anti-MRPL45 Antibody (A89411) at dilution of 100 (40x lens). DAPI was used to stain the cell nuclei (blue).



Immunofluorescence analysis of L929 cells using Anti-MRPL45 Antibody (A89411) at dilution of 100 (40x lens). DAPI was used to stain the cell nuclei (blue).