

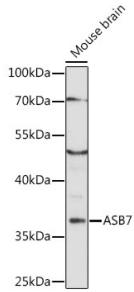
Anti-ASB7 Antibody (A89436)

Specifications:

Name:	Anti-ASB7 Antibody
Description:	Rabbit polyclonal antibody to ASB7.
Applications:	WB
Recommended Dilutions:	WB: 1:500-1:2,000
Reactivity:	Mouse
Immunogen:	Recombinant fusion protein containing a sequence corresponding to amino acids 1-274 of human ASB7 (NP_078984.2).
Sequence:	MLHHHCRRNPQLQEELQIQAAVAAGDVHTVRKMLEQQGYSPNGRDANGWTLLHFSAARG KERCVRVFLFHGADPTVKDLIGGFTALHYAAMHGRARIARLMESEYRSDIINAKSND GWTPLVHAAHYGRDSFVRLLEFKAEVDPLSDKGTTPQLAIIRERSSCVKILLDHNA NIDIQNGFLLRYAVIKSNHSYCRMFLQRGADTNLGRLEDGQTPLHLSALRDDVLCARM LYNYGADTNRNYEGQTPLAVSISISGSSRPCLDFLQEVTSM
Host:	Rabbit
Clonality:	Polyclonal
Isotype:	IgG
Conjugate:	Unconjugated
Purification:	Affinity purification.
Molecular Weight:	36 kDa
Product Form:	Liquid
Formulation:	Supplied in Phosphate Buffered Saline, pH 7.3, with 50% Glycerol and 0.01% Thiomersal.
Storage:	Shipped at 4°C. Upon delivery aliquot and store at -20°C. Avoid freeze / thaw cycles.
Disclaimer:	This product is for research use only. It is not intended for diagnostic or therapeutic use.

Anti-ASB7 Antibody (A89436)

Images:



Western blot analysis of extracts of mouse brain, using Anti-ASB7 Antibody (A89436) at 1:1,000 dilution. The secondary antibody was Goat Anti-Rabbit IgG H&L Antibody (HRP) at 1:10,000 dilution. Lysates/proteins were present at 25 μ g per lane. The blocking buffer used was 3% non-fat dry milk in TBST. Detection was with a ECL Enhanced Kit (RM00021). Exposure time: 30s.