

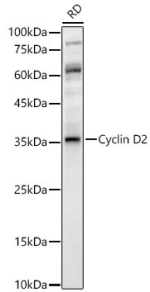
## Anti-Cyclin D2 Antibody (A89459)

### Specifications:

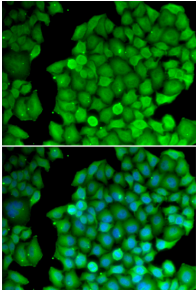
Name:	Anti-Cyclin D2 Antibody
Description:	Rabbit polyclonal antibody to Cyclin D2.
Applications:	WB, IHC, ICC/IF
Recommended Dilutions:	WB: 1:100-1:500, IHC: 1:50-1:200, ICC/IF: 1:50-1:200
Reactivity:	Human, Mouse, Rat
Immunogen:	Recombinant fusion protein containing a sequence corresponding to amino acids 1-289 of human Cyclin D2 (NP_001750.1).
Sequence:	MELLCHEVDPVRRRAVRDRNLLRDDRVLQNLLTIEERYLPQCSYFKCVQKDIQPYMRRM VATWMLEVCEEQKCEEEVFPLAMNYLDRFLAGVPTPKSHLQLLGAVCMFLASKLKETS PLTAEKLCIYTDNSIKPQELLEWELVVLGKWKWNLAAVTPHDFIEHILRKLPQQREKL SLIRKHAQTFIALCATDFKFKAMYPPSMIATGSVGAAICGLQQDEEVSSLTCDALTELL AKITNTDVDCLKACQEIQIEAVLLNSLQQYRQDQRDQSKSEDELQASTPTDVRDIDL
Host:	Rabbit
Clonality:	Polyclonal
Isotype:	IgG
Conjugate:	Unconjugated
Purification:	Affinity purification.
Molecular Weight:	33 kDa
Product Form:	Liquid
Formulation:	Supplied in Phosphate Buffered Saline, pH 7.3, with 50% Glycerol and 0.01% Thiomersal.
Storage:	Shipped at 4°C. Upon delivery aliquot and store at -20°C. Avoid freeze / thaw cycles.
Disclaimer:	This product is for research use only. It is not intended for diagnostic or therapeutic use.

## Anti-Cyclin D2 Antibody (A89459)

### Images:



Western blot analysis of RD, using Anti-Cyclin D2 Antibody (A89459) at 1:500 dilution. The secondary antibody was Goat Anti-Rabbit IgG H&L Antibody (HRP) at 1:10,000 dilution. Lysates/proteins were present at 25 $\mu$ g per lane. The blocking buffer used was 3% non-fat dry milk in TBST. Detection was with a ECL Enhanced Kit (RM00021). Exposure time: 60s.



Immunofluorescence analysis of U2OS cells using Anti-Cyclin D2 Antibody (A89459). DAPI was used to stain the cell nuclei (blue).