

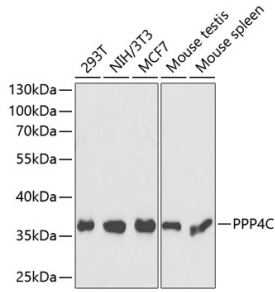
Anti-PP-X Antibody (A89466)

Specifications:

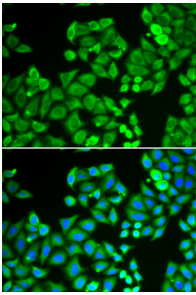
Name:	Anti-PP-X Antibody
Description:	Rabbit polyclonal antibody to PP-X.
Applications:	WB, IHC, ICC/IF, IP
Recommended Dilutions:	WB: 1:500-1:2,000, IHC: 1:50-1:200, ICC/IF: 1:50-1:200, IP: 1:50-1:200
Reactivity:	Human, Mouse, Rat
Immunogen:	Recombinant fusion protein containing a sequence corresponding to amino acids 1-307 of human PPP4C (NP_002711.1).
Sequence:	MAEISDLDRQIEQLRRCCELIKSEVKALCAKAREILVEESNVQRVDSPVTVCGDIHGQ FYDLKELFRVGGDVPETNYLFMGDFVDRGFYSVETFLLLLALKVRYPDRLIRGNHE SRQITQVYGFYDECLRKYGSVTWRYCTEIFDYLSLSAIDGKIFCVHGGLSPSIQTL DQIRTIDRKQEVPHDGPMDLLWSDPEDTTGWGVSPRGAGYLFGSDVVAQFNAANDID MICRAHQLVMEGYKWHFNETVLTVWSAPNYCYRCGNVAIAILELDEHLQKDFIIFEAAP QETRGIPSKKPVADYFL
Host:	Rabbit
Clonality:	Polyclonal
Isotype:	IgG
Conjugate:	Unconjugated
Purification:	Affinity purification.
Molecular Weight:	36 kDa
Product Form:	Liquid
Formulation:	Supplied in Phosphate Buffered Saline, pH 7.3, with 50% Glycerol and 0.02% Sodium Azide.
Storage:	Shipped at 4°C. Upon delivery aliquot and store at -20°C. Avoid freeze / thaw cycles.
Disclaimer:	This product is for research use only. It is not intended for diagnostic or therapeutic use.

Anti-PP-X Antibody (A89466)

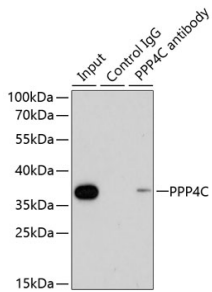
Images:



Western blot analysis of extracts of various cell lines, using Anti-PP-X Antibody (A89466) at 1:1,000 dilution. The secondary antibody was Goat Anti-Rabbit IgG H&L Antibody (HRP) at 1:10,000 dilution. Lysates/proteins were present at 25µg per lane. The blocking buffer used was 3% non-fat dry milk in TBST.



Immunofluorescence analysis of U2OS cells using Anti-PP-X Antibody (A89466). DAPI was used to stain the cell nuclei (blue).



Immunoprecipitation analysis of 200µg extracts of 293T cells using 1µg of Anti-PP-X Antibody (A89466). This Western blot was performed on the immunoprecipitate using Anti-PP-X Antibody (A89466) at a dilution of 1:1000.