

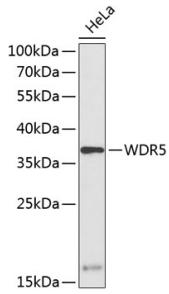
Anti-WDR5 Antibody (A89559)

Specifications:

Name:	Anti-WDR5 Antibody
Description:	Rabbit polyclonal antibody to WDR5.
Applications:	WB
Recommended Dilutions:	WB: 1:500-1:2,000
Reactivity:	Human
Immunogen:	Recombinant fusion protein containing a sequence corresponding to amino acids 1-334 of human WDR5 (NP_438172.1).
Sequence:	MATEEKKPETEAARAQPTPSSSATQSKPTPVKPNYALKFTLAGHTKAVSSVKFSPNGE WLASSADKLIKIWGAYDGFKFEKTISGHKLGISDVAWSSSDSNLLVSASDDKTLKIWDV SSGKCLKTLKGHSNYVFCCNFNPQSNLIVSGSFDESRIWDVKTGKCLKTLPAHSDPV SAVHFNRDGLIVSSSYDGLCRIWDTASGQCLKTLIDDDNPPVSFVKFSPNGKYILAA TLDNTLKLWDYSKKGKCLKTYTGHKNEKYCIFANFSVTGGKWIVSGSEDNLVYIWNLQT KEIVQKLQGHTDVVISTACHPTENIIASAALENDKTIKLVKSDC
Host:	Rabbit
Clonality:	Polyclonal
Isotype:	IgG
Conjugate:	Unconjugated
Purification:	Affinity purification.
Molecular Weight:	37 kDa
Product Form:	Liquid
Formulation:	Supplied in Phosphate Buffered Saline, pH 7.3, with 50% Glycerol and 0.02% Sodium Azide.
Storage:	Shipped at 4°C. Upon delivery aliquot and store at -20°C. Avoid freeze / thaw cycles.
Disclaimer:	This product is for research use only. It is not intended for diagnostic or therapeutic use.

Anti-WDR5 Antibody (A89559)

Images:



Western blot analysis of extracts of HeLa cells, using Anti-WDR5 Antibody (A89559) at 1:1,000 dilution. The secondary antibody was Goat Anti-Rabbit IgG H&L Antibody (HRP) at 1:10,000 dilution. Lysates/proteins were present at 25 μ g per lane. The blocking buffer used was 3% non-fat dry milk in TBST.