

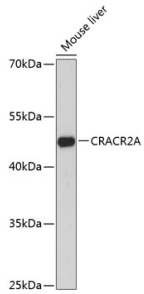
Anti-CRACR2A Antibody (A89955)

Specifications:

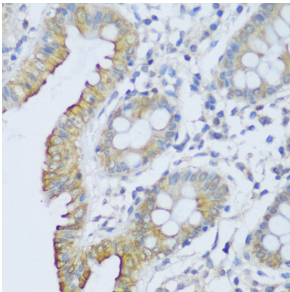
Name:	Anti-CRACR2A Antibody
Description:	Rabbit polyclonal antibody to CRACR2A.
Applications:	WB, IHC
Recommended Dilutions:	WB: 1:500-1:2,000, IHC: 1:50-1:200
Reactivity:	Human, Mouse
Immunogen:	Recombinant fusion protein containing a sequence corresponding to amino acids 1-200 of human CRACR2A (NP_001138430.1).
Sequence:	MAAPDGRVVSRPQRLGQGSGQGPKGSGACLHPLDSLEQKETQEQTSGQLVMLRKAQEF FQTCD AEGKGF IARKDMQRLHKELPLSLEELEDVFDALDADGNGYLTPQEFTTGFSHF FFSQNNPSQEDAGEQVAQRHEEKVYLSRGDEDLGDMGEDEEAQFRMLMDRLGAQKVLE DESDVKQLWLQLKKEEPHLLSNFEDF
Host:	Rabbit
Clonality:	Polyclonal
Isotype:	IgG
Conjugate:	Unconjugated
Purification:	Affinity purification.
Molecular Weight:	45 kDa
Product Form:	Liquid
Formulation:	Supplied in Phosphate Buffered Saline, pH 7.3, with 50% Glycerol and 0.01% Thiomersal.
Storage:	Shipped at 4°C. Upon delivery aliquot and store at -20°C. Avoid freeze / thaw cycles.
Disclaimer:	This product is for research use only. It is not intended for diagnostic or therapeutic use.

Anti-CRACR2A Antibody (A89955)

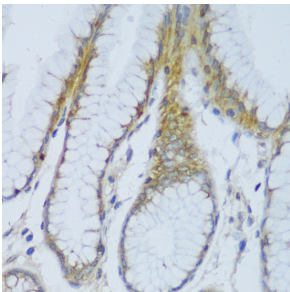
Images:



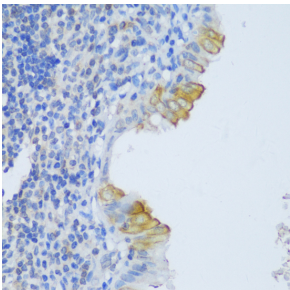
Western blot analysis of extracts of mouse liver, using Anti-CRACR2A Antibody (A89955) at 1:3,000 dilution. The secondary antibody was Goat Anti-Rabbit IgG H&L Antibody (HRP) at 1:10,000 dilution. Lysates/proteins were present at 25 μ g per lane. The blocking buffer used was 3% non-fat dry milk in TBST. Detection was with a ECL Basic Kit. Exposure time: 90s.



Immunohistochemistry analysis of paraffin-embedded human colon tissue using Anti-CRACR2A Antibody (A89955) at a dilution of 1:150 (40x lens).



Immunohistochemistry analysis of paraffin-embedded human stomach using Anti-CRACR2A Antibody (A89955) at a dilution of 1:150 (40x lens).



Immunohistochemistry analysis of paraffin-embedded human appendix tissue using Anti-CRACR2A Antibody (A89955) at a dilution of 1:150 (40x lens).