

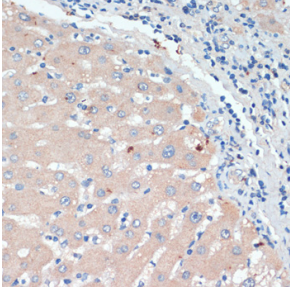
## Anti-Dopamine beta Hydroxylase Antibody (A92397)

### Specifications:

Name:	Anti-Dopamine beta Hydroxylase Antibody
Description:	Rabbit polyclonal antibody to Dopamine beta Hydroxylase.
Applications:	WB, IHC
Recommended Dilutions:	WB: 1:500-1:2,000, IHC: 1:50-1:100
Reactivity:	Human, Mouse, Rat
Immunogen:	Recombinant fusion protein containing a sequence corresponding to amino acids 388-617 of human DBH (NP_000778.3).
Sequence:	GYCTDKCTQLALPPSGIHIFASQLHHTLTGRKVVTVLVRDGREWEIVNQDNHYSHPHFQ EIRMLKVVSVHPGDVLITSCTYNTEDRELATVGGFGILEEMCVNYVHYYPQTQLELC KSAVDAGFLQKYFHLINRFNNEVDCTCPQASVSQQFTSVPWNSFNRDVLKALYSFAPI SMHCNKSSAVRFQGEWNLQPLPKVISTLEEPTQCPTSQGRSPAGPTVVSIGGGKG
Host:	Rabbit
Clonality:	Polyclonal
Isotype:	IgG
Conjugate:	Unconjugated
Purification:	Affinity purification.
Product Form:	Liquid
Formulation:	Supplied in Phosphate Buffered Saline, pH 7.3, with 50% Glycerol and 0.02% Sodium Azide.
Storage:	Shipped at 4°C. Upon delivery aliquot and store at -20°C. Avoid freeze / thaw cycles.
Disclaimer:	This product is for research use only. It is not intended for diagnostic or therapeutic use.

## Anti-Dopamine beta Hydroxylase Antibody (A92397)

Images:



Immunohistochemistry analysis of paraffin-embedded human liver using Anti-Dopamine beta Hydroxylase Antibody (A92397) at a dilution of 1:200 (40x lens).