

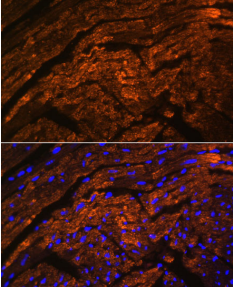
Anti-Titin Antibody (A92520)

Specifications:

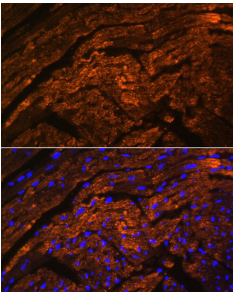
Name:	Anti-Titin Antibody
Description:	Rabbit polyclonal antibody to Titin.
Applications:	ICC/IF
Recommended Dilutions:	ICC/IF: 1:50-1:200
Reactivity:	Mouse, Rat
Immunogen:	Recombinant fusion protein containing a sequence corresponding to amino acids 5347-5604 of human TTN (NP_596870.2).
Sequence:	LDVLPFNFDVDPNMDSREGEDKELKIDLEVFEMPPRFIMPICDFKIPENSDAVFKCSVI GIPTPEVKWYKEYMCIEPDNIKYVISEEKGSHTLKIRNVCLSDSATYRCRAVNCVGEA ICRGFLTMGDSEIFAVIAKKSQVTLSSLMEELVLKSNYTDSEFFEFQVVEGPPRFIKGI SDCYAPIGTAAAYFQCLVGRSPRPTVYWKDGLVQGRRFTVEESGTGFHNLFITSLVK SDEGEYRCVATNKSGMAESFAALTLT
Host:	Rabbit
Clonality:	Polyclonal
Isotype:	IgG
Conjugate:	Unconjugated
Purification:	Affinity purification.
Product Form:	Liquid
Formulation:	Supplied in Phosphate Buffered Saline, pH 7.3, with 50% Glycerol and 0.01% Thiomersal.
Storage:	Shipped at 4°C. Upon delivery aliquot and store at -20°C. Avoid freeze / thaw cycles.
Disclaimer:	This product is for research use only. It is not intended for diagnostic or therapeutic use.

Anti-Titin Antibody (A92520)

Images:



Immunofluorescence analysis of rat heart using Anti-Titin Antibody (A92520) at a dilution of 1:100. DAPI was used to stain the cell nuclei (blue).



Immunofluorescence analysis of mouse heart using Anti-Titin Antibody (A92520) at a dilution of 1:100. DAPI was used to stain the cell nuclei (blue).