

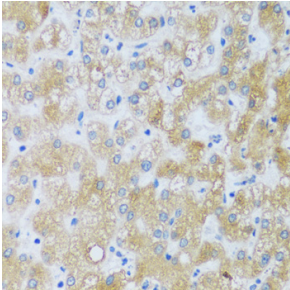
Anti-ASB4 Antibody (A92543)

Specifications:

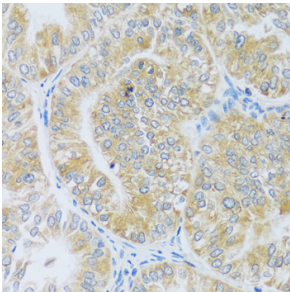
| | |
|------------------------|--|
| Name: | Anti-ASB4 Antibody |
| Description: | Rabbit polyclonal antibody to ASB4. |
| Applications: | IHC |
| Recommended Dilutions: | IHC: 1:50-1:200 |
| Reactivity: | Human, Mouse |
| Immunogen: | Recombinant fusion protein containing a sequence corresponding to amino acids 1-300 of human ASB4 (NP_665879.1). |
| Sequence: | MDGTTAPVTKSGAAKLVKRNFLKSNDFGKLGKAILIQRQIDVDTVFEVEDENMVLA SYKQGYWLPKSSWATGLHLSVLFVGHVECLLVLLDHNATINCRPNGLKPLHVACE MANVDCVKILCDRGAKLNCYSLSGHTALHFCTTPSSILCAKQLVWRGANVNMKTNNQD EETPLHTAAHFGLSELVAFYVEHGAIVDSVNAHMETPLAIAAYWALRFKEQEYSTEHH LVCRMLLDYKAEVNARDDDFKSPLHKAAWNCDHVLHMMLEAGAEANLMDINGCAAIQ YVLKVTSVRP |
| Host: | Rabbit |
| Clonality: | Polyclonal |
| Isotype: | IgG |
| Conjugate: | Unconjugated |
| Purification: | Affinity purification. |
| Product Form: | Liquid |
| Formulation: | Supplied in Phosphate Buffered Saline, pH 7.3, with 50% Glycerol and 0.01% Thiomersal. |
| Storage: | Shipped at 4°C. Upon delivery aliquot and store at -20°C. Avoid freeze / thaw cycles. |
| Disclaimer: | This product is for research use only. It is not intended for diagnostic or therapeutic use. |

Anti-ASB4 Antibody (A92543)

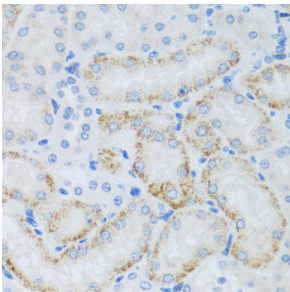
Images:



Immunohistochemistry analysis of paraffin-embedded human liver using Anti-ASB4 Antibody (A92543) at a dilution of 1:100 (40x lens).



Immunohistochemistry analysis of paraffin-embedded human uterine cancer using Anti-ASB4 Antibody (A92543) at a dilution of 1:100 (40x lens).



Immunohistochemistry analysis of paraffin-embedded mouse kidney using Anti-ASB4 Antibody (A92543) at a dilution of 1:100 (40x lens).