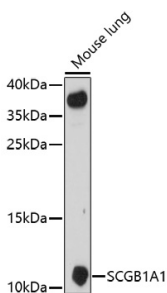


Anti-Uteroglobin Antibody (A92712)

Specifications:

Name:	Anti-Uteroglobin Antibody
Description:	Rabbit polyclonal antibody to Uteroglobin.
Applications:	WB, IHC, ICC/IF
Recommended Dilutions:	WB: 1:500-1:2,000, IHC: 1:50-1:200, ICC/IF: 1:50-1:200
Reactivity:	Mouse, Rat
Immunogen:	Recombinant fusion protein containing a sequence corresponding to amino acids 22-91 of human SCGB1A1 (NP_003348.1).
Sequence:	EICPSFQRVIETLLMDTPSSYEAAAMELFSPDQDMREAGAQLKKLVDLTPQKPRESIK LMEKIAQSSLCN
Host:	Rabbit
Clonality:	Polyclonal
Isotype:	IgG
Conjugate:	Unconjugated
Purification:	Affinity purification.
Molecular Weight:	11 kDa
Product Form:	Liquid
Formulation:	Supplied in Phosphate Buffered Saline, pH 7.3, with 50% Glycerol and 0.01% Thiomersal.
Storage:	Shipped at 4°C. Upon delivery aliquot and store at -20°C. Avoid freeze / thaw cycles.
Disclaimer:	This product is for research use only. It is not intended for diagnostic or therapeutic use.

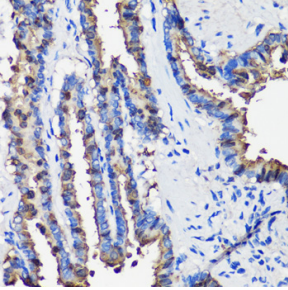
Images:



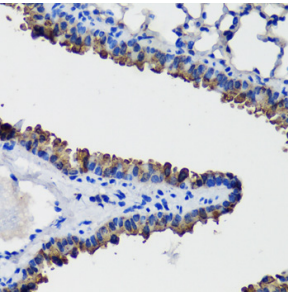
Western blot analysis of extracts of mouse lung, using Anti-Uteroglobin Antibody (A92712) at 1:1,000 dilution. The secondary antibody was Goat Anti-Rabbit IgG H&L Antibody (HRP) at 1:10,000 dilution. Lysates/proteins were present at 25µg per lane. The blocking buffer used was 3% non-fat dry milk in TBST. Detection was with a ECL Enhanced Kit (RM00021). Exposure time: 90s.

Anti-Uteroglobin Antibody (A92712)

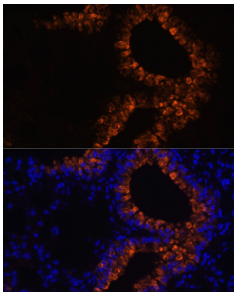
Images continued:



Immunohistochemistry analysis of paraffin-embedded rat lung using Anti-Uteroglobin Antibody (A92712) at a dilution of 1:100 (40x lens). Perform microwave antigen retrieval with 10 mM PBS buffer pH 7.2 before commencing with IHC staining protocol.



Immunohistochemistry analysis of paraffin-embedded mouse lung using Anti-Uteroglobin Antibody (A92712) at a dilution of 1:100 (40x lens). Perform microwave antigen retrieval with 10 mM PBS buffer pH 7.2 before commencing with IHC staining protocol.



Immunofluorescence analysis of mouse lung cells using Anti-Uteroglobin Antibody (A92712) at a dilution of 1:100. DAPI was used to stain the cell nuclei (blue).