

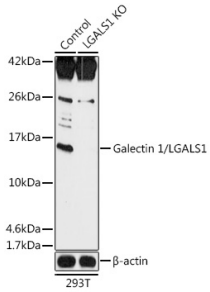
Anti-Galectin 1 Antibody (A92820)

Specifications:

| | |
|------------------------|--|
| Name: | Anti-Galectin 1 Antibody |
| Description: | Rabbit polyclonal antibody to Galectin 1. |
| Applications: | WB |
| Recommended Dilutions: | WB: 1:1,000-1:4,000 |
| Reactivity: | Human, Mouse, Rat |
| Immunogen: | Recombinant fusion protein containing a sequence corresponding to amino acids 1-135 of human Galectin 1/Galectin 1/LGALS1 (NP_002296.1). |
| Sequence: | MACGLVASNLNLKPGDECLRVRGEVAPDAKSFVLNLGKDSNNLCLHFNPRFNAHGDANT IVCNSKDGGAWGTEQREAVFPFQPGSVAEVCITFDQANLTVKLPDGYEFKFPNRLNLE AINYMAADGDFKIKCVAFD |
| Host: | Rabbit |
| Clonality: | Polyclonal |
| Isotype: | IgG |
| Conjugate: | Unconjugated |
| Purification: | Affinity purification. |
| Molecular Weight: | 14 kDa |
| Product Form: | Liquid |
| Formulation: | Supplied in Phosphate Buffered Saline, pH 7.3, with 50% Glycerol and 0.01% Thiomersal. |
| Storage: | Shipped at 4°C. Upon delivery aliquot and store at -20°C. Avoid freeze / thaw cycles. |
| Disclaimer: | This product is for research use only. It is not intended for diagnostic or therapeutic use. |

Anti-Galectin 1 Antibody (A92820)

Images:



Western blot analysis of extracts from normal (control) and Galectin 1/Galectin 1/LGALS1 knockout (KO) 293T cells, using Anti-Galectin 1 Antibody (A92820) at 1:1,000 dilution. The secondary antibody was Goat Anti-Rabbit IgG H&L Antibody (HRP) at 1:10,000 dilution. Lysates/proteins were present at 25 μ g per lane. The blocking buffer used was 3% non-fat dry milk in TBST. Detection was with a ECL Basic Kit. Exposure time: 3min.