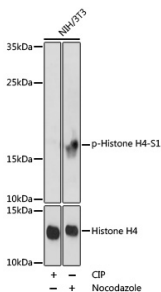


Anti-Histone H4 (phospho Ser1) Antibody (A92835)

Specifications:

Name:	Anti-Histone H4 (phospho Ser1) Antibody
Description:	Rabbit polyclonal antibody to Histone H4 (phospho Ser1).
Applications:	WB, IHC
Recommended Dilutions:	WB: 1:500-1:2,000, IHC: 1:100-1:200
Reactivity:	Human, Mouse, Rat
Immunogen:	A synthetic phosphorylated peptide around S1 of human Histone H4 (NP_003529.1).
Sequence:	MSGR
Host:	Rabbit
Clonality:	Polyclonal
Isotype:	IgG
Conjugate:	Unconjugated
Purification:	Affinity purification.
Molecular Weight:	17 kDa
Product Form:	Liquid
Formulation:	Supplied in Phosphate Buffered Saline, pH 7.3, with 50% Glycerol and 0.01% Thiomersal.
Storage:	Shipped at 4°C. Upon delivery aliquot and store at -20°C. Avoid freeze / thaw cycles.
Disclaimer:	This product is for research use only. It is not intended for diagnostic or therapeutic use.

Images:



Western blot analysis of extracts of NIH/3T3 cells, using Anti-Histone H4 (phospho Ser1) Antibody (A92835) at 1:1,000 dilution or Histone H4 Rabbit polyclonal antibody (A1131). NIH/3T3 cells were treated by CIP(20uL/400ul) at 37°C for 1 hour or Nocodazole (50 ng/ml) at 37°C for 20 hours. The secondary antibody was Goat Anti-Rabbit IgG H&L Antibody (HRP) at 1:10,000 dilution. Lysates/proteins were present at 25µg per lane. The blocking buffer used was 3% BSA. Detection was with a ECL Basic Kit. Exposure time: 180s.