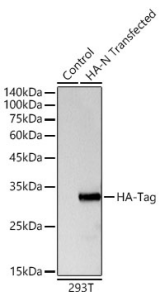


Anti-HA Tag Antibody (A93157)

Specifications:

| | |
|------------------------|--|
| Name: | Anti-HA Tag Antibody |
| Description: | Rabbit polyclonal antibody to HA Tag. |
| Applications: | WB, ICC/IF |
| Recommended Dilutions: | WB: 1:2,000-1:6,000, IF: 1:50-1:200 |
| Reactivity: | Species Independent |
| Immunogen: | A synthetic peptide corresponding to HA-Tag. |
| Sequence: | YPVDVPDYA |
| Host: | Rabbit |
| Clonality: | Polyclonal |
| Isotype: | IgG |
| Conjugate: | Unconjugated |
| Purification: | Affinity purification. |
| Molecular Weight: | 26 kDa |
| Product Form: | Liquid |
| Formulation: | Supplied in Phosphate Buffered Saline, pH 7.3, with 50% Glycerol and 0.05% Proclin 300. |
| Storage: | Shipped at 4°C. Upon delivery aliquot and store at -20°C. Avoid freeze / thaw cycles. |
| Disclaimer: | This product is for research use only. It is not intended for diagnostic or therapeutic use. |

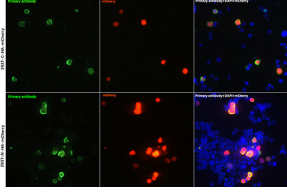
Images:



Western blot analysis of 293T, using Anti-HA Tag Antibody (A93157) at 1:10,000 dilution. Lysates/proteins were present at 25µg per lane. The blocking buffer used was 3% non-fat dry milk in TBST. Detection was with a ECL Basic Kit. Exposure time: 3s.

Anti-HA Tag Antibody (A93157)

Images continued:



Immunofluorescence analysis of 293T-HA-C and 293T-HA-N cells using Anti-HA Tag Antibody (A93157) at a dilution of 1:100 (40x lens). DAPI was used to stain the cell nuclei (blue).