

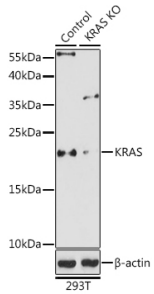
Anti-KRAS Antibody (A93164)

Specifications:

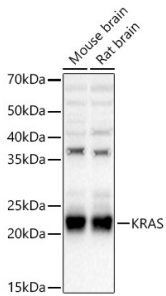
Name:	Anti-KRAS Antibody
Description:	Rabbit polyclonal antibody to KRAS.
Applications:	WB, ICC/IF
Recommended Dilutions:	WB: 1:1,000-1:5,000, ICC/IF: 1:50-1:200
Reactivity:	Human, Mouse, Rat
Immunogen:	Recombinant fusion protein containing a sequence corresponding to amino acids 30-188 of human KRAS (NP_004976.2).
Sequence:	DEYDPTIEDSYRKQVVIDGETCLLDILDITAGQEEYSAMRDQYMRTGEGFLCVFAINNT KSFEDIHHYREQIKRVKDSSEVPMVLVGNKCDLPSRTVDTKQAQDLARSYGIPFIETS AKTRQGVDDAFYTLVREIRKHKEKMSKDGKSKKSKTKCVIM
Host:	Rabbit
Clonality:	Polyclonal
Isotype:	IgG
Conjugate:	Unconjugated
Purification:	Affinity purification.
Molecular Weight:	21 kDa
Product Form:	Liquid
Formulation:	Supplied in Phosphate Buffered Saline, pH 7.3, with 50% Glycerol and 0.01% Thiomersal.
Storage:	Shipped at 4°C. Upon delivery aliquot and store at -20°C. Avoid freeze / thaw cycles.
Disclaimer:	This product is for research use only. It is not intended for diagnostic or therapeutic use.

Anti-KRAS Antibody (A93164)

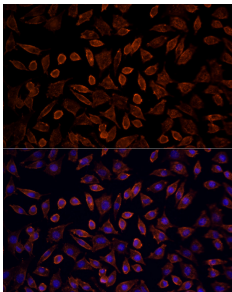
Images:



Western blot analysis of extracts from normal (control) and KRAS knockout (KO) 293T cells, using Anti-KRAS Antibody (A93164) at 1:1,000 dilution. The secondary antibody was Goat Anti-Rabbit IgG H&L Antibody (HRP) at 1:10,000 dilution. Lysates/proteins were present at 25µg per lane. The blocking buffer used was 3% non-fat dry milk in TBST. Detection was with a ECL Basic Kit. Exposure time: 3min.



Western blot analysis of various lysates, using Anti-KRAS Antibody (A93164) at 1:3,000 dilution. The secondary antibody was Goat Anti-Rabbit IgG H&L Antibody (HRP) at 1:10,000 dilution. Lysates/proteins were present at 25µg per lane. The blocking buffer used was 3% non-fat dry milk in TBST. Detection was with a ECL Basic Kit. Exposure time: 10s.



Immunofluorescence analysis of L929 cells using Anti-KRAS Antibody (A93164) at dilution of 100 (40x lens). DAPI was used to stain the cell nuclei (blue).