

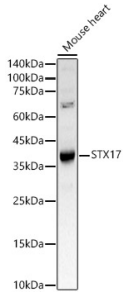
Anti-STX17 Antibody (A93329)

Specifications:

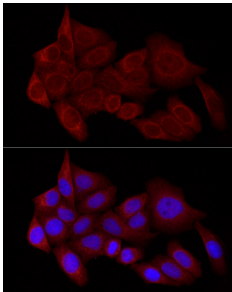
Name:	Anti-STX17 Antibody
Description:	Rabbit polyclonal antibody to STX17.
Applications:	WB, ICC/IF
Recommended Dilutions:	WB: 1:500-1:1,000, ICC/IF: 1:50-1:200
Reactivity:	Human, Mouse
Immunogen:	Recombinant fusion protein containing a sequence corresponding to amino acids 1-130 of human STX17 (NP_060389.2).
Sequence:	MSEDEEKVKLRRLEPAIQKFIKIVIPTDLERLRKHQINIEKYQRRCRIWDKLHEEHINA GRTVQQLRSNIREIEKLCCLKVRKDDLVLKRMIDPVKEEASAATAEFLQLHLESVEEL KKQFNDEETLLQPP
Host:	Rabbit
Clonality:	Polyclonal
Isotype:	IgG
Conjugate:	Unconjugated
Purification:	Affinity purification.
Molecular Weight:	37 kDa
Product Form:	Liquid
Formulation:	Supplied in Phosphate Buffered Saline, pH 7.3, with 50% Glycerol and 0.01% Thiomersal.
Storage:	Shipped at 4°C. Upon delivery aliquot and store at -20°C. Avoid freeze / thaw cycles.
Disclaimer:	This product is for research use only. It is not intended for diagnostic or therapeutic use.

Anti-STX17 Antibody (A93329)

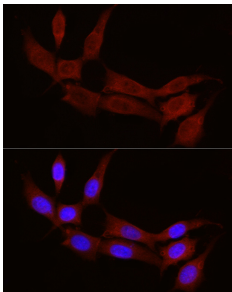
Images:



Western blot analysis of Mouse heart, using Anti-STX17 Antibody (A93329) at 1:1,000 dilution. The secondary antibody was Goat Anti-Rabbit IgG H&L Antibody (HRP) at 1:10,000 dilution. Lysates/proteins were present at 25 μ g per lane. The blocking buffer used was 3% non-fat dry milk in TBST. Detection was with a ECL Basic Kit. Exposure time: 30s.



Immunofluorescence analysis of HeLa cells using Anti-STX17 Antibody (A93329) at a dilution of 1:100 (40x lens). DAPI was used to stain the cell nuclei (blue).



Immunofluorescence analysis of NIH/3T3 cells using Anti-STX17 Antibody (A93329) at a dilution of 1:100 (40x lens). DAPI was used to stain the cell nuclei (blue).