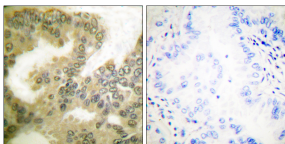


Anti-Cyclin D3 (phospho Thr283) Antibody (A93468)

Specifications:

Name:	Anti-Cyclin D3 (phospho Thr283) Antibody
Description:	Rabbit polyclonal antibody to Cyclin D3 (phospho Thr283).
Specificity:	This antibody detects endogenous levels of Cyclin D3 only when phosphorylated at Thr283.
Applications:	WB, IHC, ELISA
Recommended Dilutions:	IF: 1:100-1:500, ELISA: 1:10000
Reactivity:	Human, Mouse, Rat
Immunogen:	Synthetic peptide derived from human Cyclin D3 around the phosphorylation site of Thr283 (amino acids 243-292).
Host:	Rabbit
Clonality:	Polyclonal
Isotype:	IgG
Conjugate:	Unconjugated
Purification:	Purified from rabbit serum by antigen affinity chromatography using the immunizing phospho peptide.
Molecular Weight:	32kDa
Product Form:	Liquid
Formulation:	Supplied in Phosphate Buffered Saline (without Mg ²⁺ and Ca ²⁺), pH 7.4, with 150mM NaCl, 0.02% Sodium Azide, and 50% Glycerol.
Storage:	Shipped at 4°C. Upon delivery aliquot and store at -20°C. Avoid freeze / thaw cycles.
Disclaimer:	This product is for research use only. It is not intended for diagnostic or therapeutic use.

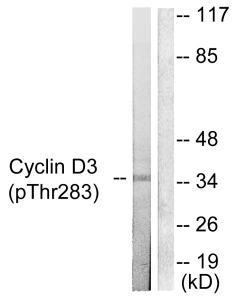
Images:



Immunohistochemical analysis of paraffin-embedded human lung carcinoma using Anti-Cyclin D3 (phospho Thr283) Antibody. The right hand panel represents a negative control, where the antibody was pre-incubated with the immunising peptide.

Anti-Cyclin D3 (phospho Thr283) Antibody (A93468)

Images continued:



Western blot analysis of lysates from K562 cells treated with UV 5' using Anti-Cyclin D3 (phospho Thr283) Antibody. The right hand lane represents a negative control, where the antibody is blocked by the immunising peptide.