

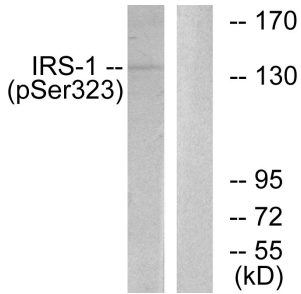
## Anti-IRS-1 (phospho Ser323) Antibody (A93493)

### Specifications:

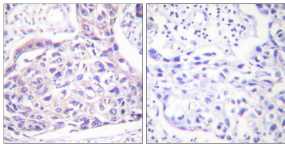
Name:	Anti-IRS-1 (phospho Ser323) Antibody
Description:	Rabbit polyclonal antibody to IRS-1 (phospho Ser323).
Specificity:	This antibody detects endogenous levels of IRS-1 only when phosphorylated at Ser323.
Applications:	WB, IHC, IF, ELISA
Recommended Dilutions:	WB: 1:500-1:1000, IHC: 1:50-1:100, ELISA: 1:5000
Reactivity:	Human, Mouse, Rat
Immunogen:	Synthetic peptide derived from human IRS-1 around the phosphorylation site of Ser323 (amino acids 289-338).
Host:	Rabbit
Clonality:	Polyclonal
Isotype:	IgG
Conjugate:	Unconjugated
Purification:	Purified from rabbit serum by antigen affinity chromatography using the immunizing phospho peptide.
Molecular Weight:	131kDa
Product Form:	Liquid
Formulation:	Supplied in Phosphate Buffered Saline (without Mg <sup>2+</sup> and Ca <sup>2+</sup> ), pH 7.4, with 150mM NaCl, 0.02% Sodium Azide, and 50% Glycerol.
Storage:	Shipped at 4°C. Upon delivery aliquot and store at -20°C. Avoid freeze / thaw cycles.
Disclaimer:	This product is for research use only. It is not intended for diagnostic or therapeutic use.

## Anti-IRS-1 (phospho Ser323) Antibody (A93493)

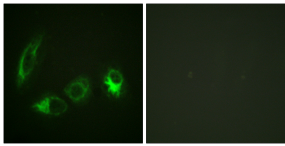
### Images:



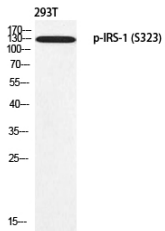
Western blot analysis of lysates from COS7 cells treated with Serum 20% 15' using Anti-IRS-1 (phospho Ser323) Antibody. The right hand lane represents a negative control, where the antibody is blocked by the immunising peptide.



Immunohistochemical analysis of paraffin-embedded human breast carcinoma using Anti-IRS-1 (phospho Ser323) Antibody. The right hand panel represents a negative control, where the antibody was pre-incubated with the immunising peptide.



Immunofluorescence analysis of HeLa cells using Anti-IRS-1 (phospho Ser323) Antibody. The right hand panel represents a negative control, where the antibody was pre-incubated with the immunising peptide.



Western blot analysis of 293T using Anti-IRS-1 (phospho Ser323) Antibody.