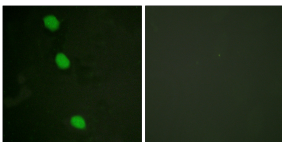


## Anti-CaMK4 (phospho Thr196 + Thr200) Antibody (A93585)

### Specifications:

Name:	Anti-CaMK4 (phospho Thr196 + Thr200) Antibody
Description:	Rabbit polyclonal antibody to CaMK4 (phospho Thr196 + Thr200).
Specificity:	This antibody detects endogenous levels of CaMK4 only when phosphorylated at Thr196/200.
Applications:	WB, IHC, IF, ELISA
Recommended Dilutions:	WB: 1:500-1:1000, ELISA: 1:10000
Reactivity:	Human, Mouse, Rat
Immunogen:	Synthetic peptide derived from human CaMK4 around the phosphorylation site of Thr196/200 (amino acids 166-215).
Host:	Rabbit
Clonality:	Polyclonal
Isotype:	IgG
Conjugate:	Unconjugated
Purification:	Purified from rabbit serum by antigen affinity chromatography using the immunizing phospho peptide.
Molecular Weight:	51kDa
Product Form:	Liquid
Formulation:	Supplied in Phosphate Buffered Saline (without Mg <sup>2+</sup> and Ca <sup>2+</sup> ), pH 7.4, with 150mM NaCl, 0.02% Sodium Azide, and 50% Glycerol.
Storage:	Shipped at 4°C. Upon delivery aliquot and store at -20°C. Avoid freeze / thaw cycles.
Disclaimer:	This product is for research use only. It is not intended for diagnostic or therapeutic use.

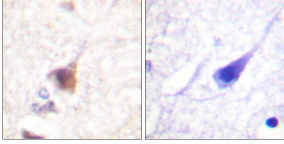
### Images:



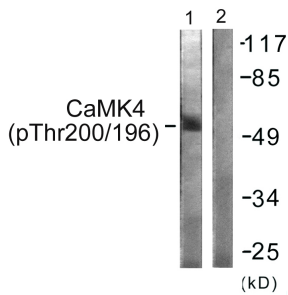
Immunofluorescence analysis of HeLa cells using Anti-CaMK4 (phospho Thr196 + Thr200) Antibody. The right hand panel represents a negative control, where the antibody was pre-incubated with the immunising peptide.

## Anti-CaMK4 (phospho Thr196 + Thr200) Antibody (A93585)

Images continued:



Immunohistochemical analysis of paraffin-embedded human brain using Anti-CaMK4 (phospho Thr196 + Thr200) Antibody. The right hand panel represents a negative control, where the antibody was pre-incubated with the immunising peptide.



Western blot analysis of lysates from K562 cells treated with H<sub>2</sub>O<sub>2</sub> 100uM 30' using Anti-CaMK4 (phospho Thr196 + Thr200) Antibody. The right hand lane represents a negative control, where the antibody is blocked by the immunising peptide.