

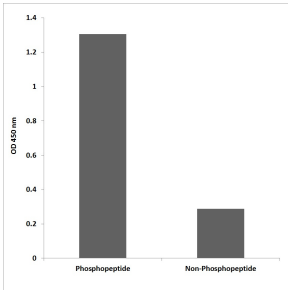
Anti-Lamin A (phospho Ser22) Antibody (A93674)

Specifications:

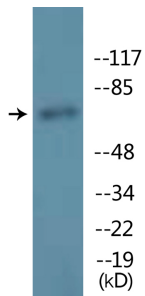
Name:	Anti-Lamin A (phospho Ser22) Antibody
Description:	Rabbit polyclonal antibody to Lamin A (phospho Ser22).
Specificity:	This antibody detects endogenous levels of LMNA only when phosphorylated at Ser22.
Applications:	WB, ELISA
Recommended Dilutions:	WB: 1:500-1:1000, ELISA: 1:1000
Reactivity:	Human, Mouse, Rat
Immunogen:	Synthetic phospho-peptide derived from human Lamin A around the phosphorylation site of Ser22.
Host:	Rabbit
Clonality:	Polyclonal
Isotype:	IgG
Conjugate:	Unconjugated
Purification:	Purified from rabbit serum by antigen affinity chromatography using the immunizing phospho peptide.
Molecular Weight:	74kDa
Product Form:	Liquid
Formulation:	Supplied in Phosphate Buffered Saline (without Mg ²⁺ and Ca ²⁺), pH 7.4, with 150mM NaCl, 0.02% Sodium Azide, and 50% Glycerol.
Storage:	Shipped at 4°C. Upon delivery aliquot and store at -20°C. Avoid freeze / thaw cycles.
Disclaimer:	This product is for research use only. It is not intended for diagnostic or therapeutic use.

Anti-Lamin A (phospho Ser22) Antibody (A93674)

Images:



ELISA for immunogen phosphopeptide (left) and non-phosphopeptide (right) using Anti-Lamin A (phospho Ser22) Antibody.



Western blot analysis of lysates from HeLa cells treated with paclitaxel 1uM 24h using Anti-Lamin A (phospho Ser22) Antibody.