

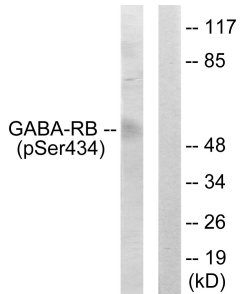
Anti-GABA-RB (phospho Ser434) Antibody (A93771)

Specifications:

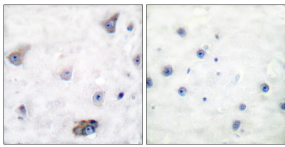
Name:	Anti-GABA-RB (phospho Ser434) Antibody
Description:	Rabbit polyclonal antibody to GABA-RB (phospho Ser434).
Specificity:	This antibody detects endogenous levels of GABA-RB only when phosphorylated at Ser434.
Applications:	WB, IHC, ELISA
Recommended Dilutions:	IHC: 1:50-1:100, ELISA: 1:1000
Reactivity:	Human, Mouse, Rat
Immunogen:	Synthetic peptide derived from human GABA-RB around the phosphorylation site of Ser434 (amino acids 401-450).
Host:	Rabbit
Clonality:	Polyclonal
Isotype:	IgG
Conjugate:	Unconjugated
Purification:	Purified from rabbit serum by antigen affinity chromatography using the immunizing phospho peptide.
Molecular Weight:	54kDa
Product Form:	Liquid
Formulation:	Supplied in Phosphate Buffered Saline (without Mg ²⁺ and Ca ²⁺), pH 7.4, with 150mM NaCl, 0.02% Sodium Azide, and 50% Glycerol.
Storage:	Shipped at 4°C. Upon delivery aliquot and store at -20°C. Avoid freeze / thaw cycles.
Disclaimer:	This product is for research use only. It is not intended for diagnostic or therapeutic use.

Anti-GABA-RB (phospho Ser434) Antibody (A93771)

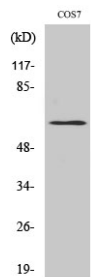
Images:



Western blot analysis of lysates from COS7 cells using Anti-GABA-RB (phospho Ser434) Antibody. The right hand lane represents a negative control, where the antibody is blocked by the immunising peptide.



Immunohistochemical analysis of paraffin-embedded human brain using Anti-GABA-RB (phospho Ser434) Antibody. The right hand panel represents a negative control, where the antibody was pre-incubated with the immunising peptide.



Western blot analysis of various cells using Anti-GABA-RB (phospho Ser434) Antibody.