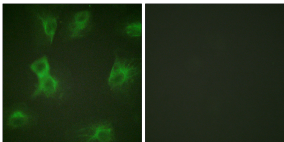


Anti-HRS (phospho Tyr334) Antibody (A93781)

Specifications:

Name:	Anti-HRS (phospho Tyr334) Antibody
Description:	Rabbit polyclonal antibody to HRS (phospho Tyr334).
Specificity:	This antibody detects endogenous levels of HRS only when phosphorylated at Tyr334.
Applications:	WB, IHC, IF, ELISA
Recommended Dilutions:	WB: 1:500-1:1000, IHC: 1:50-1:100, IF: 1:100-1:500, ELISA: 1:1000
Reactivity:	Human, Mouse, Rat
Immunogen:	Synthetic peptide derived from human HRS around the phosphorylation site of Tyr334 (amino acids 301-350).
Host:	Rabbit
Clonality:	Polyclonal
Isotype:	IgG
Conjugate:	Unconjugated
Purification:	Purified from rabbit serum by antigen affinity chromatography using the immunizing phospho peptide.
Molecular Weight:	86kDa
Product Form:	Liquid
Formulation:	Supplied in Phosphate Buffered Saline (without Mg ²⁺ and Ca ²⁺), pH 7.4, with 150mM NaCl, 0.02% Sodium Azide, and 50% Glycerol.
Storage:	Shipped at 4°C. Upon delivery aliquot and store at -20°C. Avoid freeze / thaw cycles.
Disclaimer:	This product is for research use only. It is not intended for diagnostic or therapeutic use.

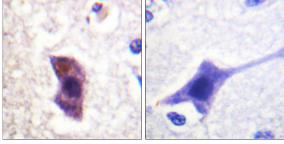
Images:



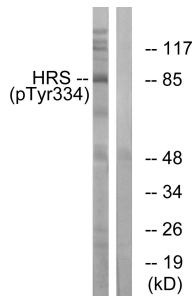
Immunofluorescence analysis of HeLa cells, treated with Forskolin 40nM 15', using Anti-HRS (phospho Tyr334) Antibody. The right hand panel represents a negative control, where the antibody was pre-incubated with the immunising peptide.

Anti-HRS (phospho Tyr334) Antibody (A93781)

Images continued:



Immunohistochemical analysis of paraffin-embedded human brain using Anti-HRS (phospho Tyr334) Antibody. The right hand panel represents a negative control, where the antibody was pre-incubated with the immunising peptide.



Western blot analysis of lysates from HepG2 cells treated with PMA 125ng/ml 30' using Anti-HRS (phospho Tyr334) Antibody. The right hand lane represents a negative control, where the antibody is blocked by the immunising peptide.