

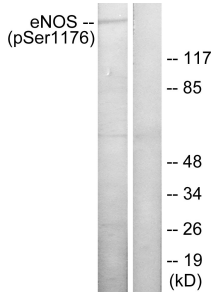
Anti-eNOS (phospho Ser1176) Antibody (A93857)

Specifications:

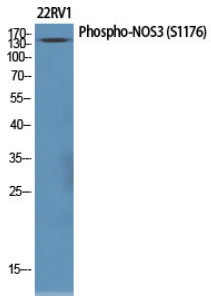
| | |
|------------------------|--|
| Name: | Anti-eNOS (phospho Ser1176) Antibody |
| Description: | Rabbit polyclonal antibody to eNOS (phospho Ser1176). |
| Specificity: | This antibody detects endogenous levels of eNOS only when phosphorylated at Ser1176. |
| Applications: | WB, ELISA |
| Recommended Dilutions: | WB: 1:500-1:1000, ELISA: 1:10000 |
| Reactivity: | Human, Mouse, Rat |
| Immunogen: | Synthetic peptide derived from human eNOS around the phosphorylation site of Ser1176 (amino acids 1144-1193). |
| Host: | Rabbit |
| Clonality: | Polyclonal |
| Isotype: | IgG |
| Conjugate: | Unconjugated |
| Purification: | Purified from rabbit serum by antigen affinity chromatography using the immunizing phospho peptide. |
| Molecular Weight: | 133kDa |
| Product Form: | Liquid |
| Formulation: | Supplied in Phosphate Buffered Saline (without Mg ²⁺ and Ca ²⁺), pH 7.4, with 150mM NaCl, 0.02% Sodium Azide, and 50% Glycerol. |
| Storage: | Shipped at 4°C. Upon delivery aliquot and store at -20°C. Avoid freeze / thaw cycles. |
| Disclaimer: | This product is for research use only. It is not intended for diagnostic or therapeutic use. |

Anti-eNOS (phospho Ser1176) Antibody (A93857)

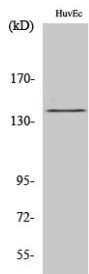
Images:



Western blot analysis of lysates from HeLa cells treated with Insulin 0.01U/ml 15' using Anti-eNOS (phospho Ser1176) Antibody. The right hand lane represents a negative control, where the antibody is blocked by the immunising peptide.



Western blot analysis of various cells using Anti-eNOS (phospho Ser1176) Antibody.



Western blot analysis of HuvEc cells using Anti-eNOS (phospho Ser1176) Antibody.