

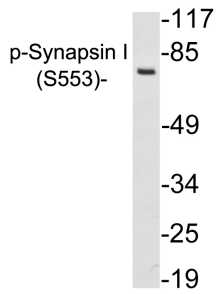
Anti-Synapsin I (phospho Ser553) Antibody (A94141)

Specifications:

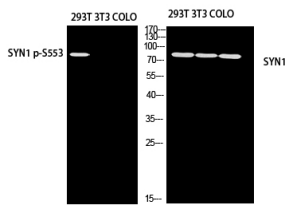
Name:	Anti-Synapsin I (phospho Ser553) Antibody
Description:	Rabbit polyclonal antibody to Synapsin I (phospho Ser553).
Specificity:	This antibody detects endogenous levels of Synapsin I only when phosphorylated at Ser553.
Applications:	WB, ELISA
Recommended Dilutions:	WB: 1:500-1:1000, IHC: 1:50-1:100, ELISA: 1:20000
Reactivity:	Human, Mouse, Rat
Immunogen:	Synthetic phospho-peptide derived from human Synapsin I around the phosphorylation site of Ser553.
Host:	Rabbit
Clonality:	Polyclonal
Isotype:	IgG
Conjugate:	Unconjugated
Purification:	Purified from rabbit serum by antigen affinity chromatography using the immunizing phospho peptide.
Molecular Weight:	73kDa
Product Form:	Liquid
Formulation:	Supplied in Phosphate Buffered Saline (without Mg ²⁺ and Ca ²⁺), pH 7.4, with 150mM NaCl, 0.02% Sodium Azide, and 50% Glycerol.
Storage:	Shipped at 4°C. Upon delivery aliquot and store at -20°C. Avoid freeze / thaw cycles.
Disclaimer:	This product is for research use only. It is not intended for diagnostic or therapeutic use.

Anti-Synapsin I (phospho Ser553) Antibody (A94141)

Images:



Western blot analysis of lysates from 293 cells treated with PMA using Anti-Synapsin I (phospho Ser553) Antibody.



Western blot analysis of 293T using Anti-Synapsin I (phospho Ser553) Antibody.