

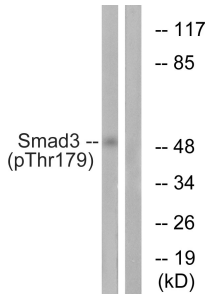
Anti-Smad3 (phospho Thr179) Antibody (A94164)

Specifications:

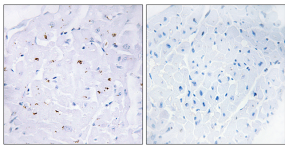
Name:	Anti-Smad3 (phospho Thr179) Antibody
Description:	Rabbit polyclonal antibody to Smad3 (phospho Thr179).
Specificity:	This antibody detects endogenous levels of Smad3 only when phosphorylated at Thr179.
Applications:	WB, IHC, ELISA
Recommended Dilutions:	WB: 1:500-1:1000, IF: 1:100-1:500, ELISA: 1:5000
Reactivity:	Human, Mouse, Rat
Immunogen:	Synthetic peptide derived from human Smad3 around the phosphorylation site of Thr179 (amino acids 145-194).
Host:	Rabbit
Clonality:	Polyclonal
Isotype:	IgG
Conjugate:	Unconjugated
Purification:	Purified from rabbit serum by antigen affinity chromatography using the immunizing phospho peptide.
Molecular Weight:	48kDa
Product Form:	Liquid
Formulation:	Supplied in Phosphate Buffered Saline (without Mg ²⁺ and Ca ²⁺), pH 7.4, with 150mM NaCl, 0.02% Sodium Azide, and 50% Glycerol.
Storage:	Shipped at 4°C. Upon delivery aliquot and store at -20°C. Avoid freeze / thaw cycles.
Disclaimer:	This product is for research use only. It is not intended for diagnostic or therapeutic use.

Anti-Smad3 (phospho Thr179) Antibody (A94164)

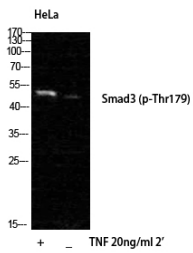
Images:



Western blot analysis of lysates from HeLa cells treated with TNF 20ng/ml 2' using Anti-Smad3 (phospho Thr179) Antibody. The right hand lane represents a negative control, where the antibody is blocked by the immunising peptide.



Immunohistochemical analysis of paraffin-embedded human heart using Anti-Smad3 (phospho Thr179) Antibody. The right hand panel represents a negative control, where the antibody was pre-incubated with the immunising peptide.



Western blot analysis of HELA cells using Anti-Smad3 (phospho Thr179) Antibody.